



## InspirAIR® FUSION

RTU\_5Te

Air Handling Unit for VRF Combination  
(Heating and Cooling)

PRODUCT  
SPECIFICATION  
SHEET



### CAPACITY

- Airflow: 2400-3600 CFM
- VRF combination 4 to 6 tons
- Dx coil for VRF application: R410a, R32 and R454B available\*
- Tested according to AHRI 410

\*Contact your local representative

### AIR CONDITIONING/HEATING (Standard)

- Combination DX evaporator (connection with VRF unit) and auxiliary electric heater with SCR modulation (12 to 24kW).
- DX evaporator connection: liquid (1/2"), gas (1 1/8")
- Economizer feature with free cooling available

### CASING (Standard)

- Double-wall enclosure
- 22-gauge galvanized steel
- White pre-painted steel exterior finish
- Access doors with quarter-turn locks
- 22-gauge galvanized steel drain pan
- Drain connections: 1" (25 mm) NPT
- Mistop component to manage possible extra condensing
- Insulation: 2" (51 mm)
- Exhaust and supply weather hoods with bird screens
- Economizer section with motorized, airtight insulated aluminum dampers for fresh, exhaust, and mixed air.

### MOUNTING (Standard)

- Standard platform
- 14-inch 11-gauge steel roof curb

product code : RC-RTU-5T-01

### WARRANTY

- Components covered for 2 years

### COMPONENTS INSTALLED AND PRE-WIRED AT THE FACTORY

- Economizer section hood
- 12 to 24kW electric coil with SCR modulation
- Exhaust fan and hood
- Fuse-less disconnect switch

### FILTERS (Standard)

4 MERV 8 filters (16" x 20" x 2")

### BLOWERS & MOTORS (Standard)

- Supply motorized impeller: 315 mm backwards inclined
- Exhaust motorized impeller: 250 mm backwards inclined
- Sealed, self-lubricating ball bearings
- High-efficiency, direct-drive EC motor

### DX EVAPORATOR FROST PREVENTION/CONTROL

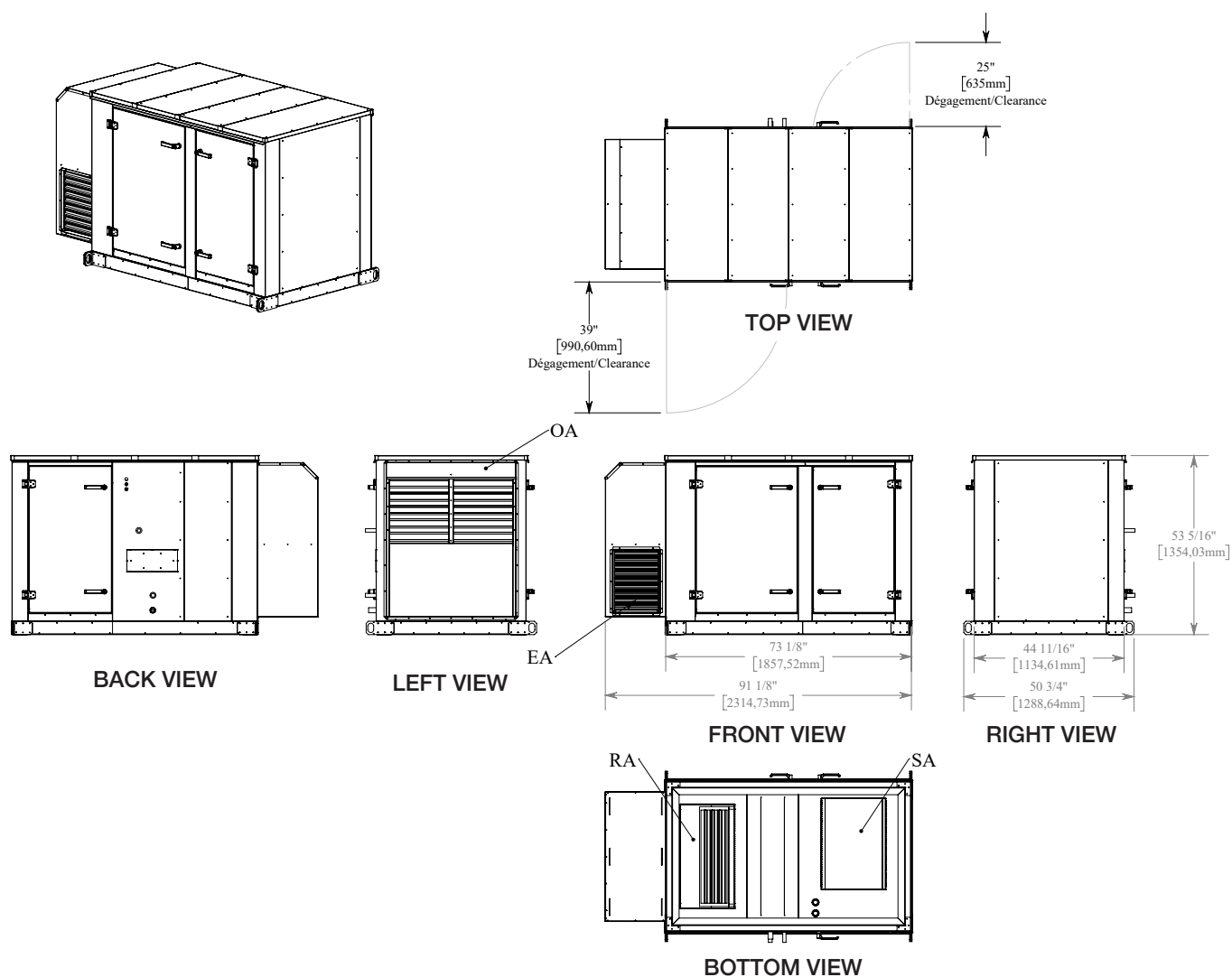
2 defrost options available:

- Fan speed reduction during defrost period (offtime defrost)
- Compensation by electric reheating

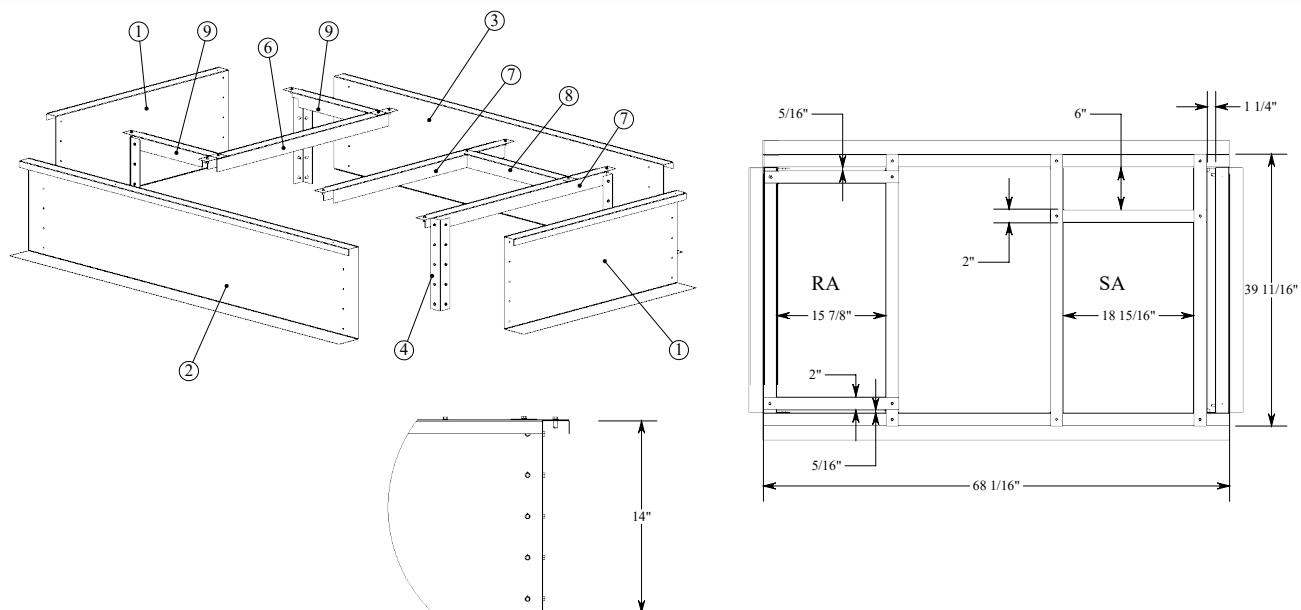
### ELECTRICAL & CONTROLS (Standard)

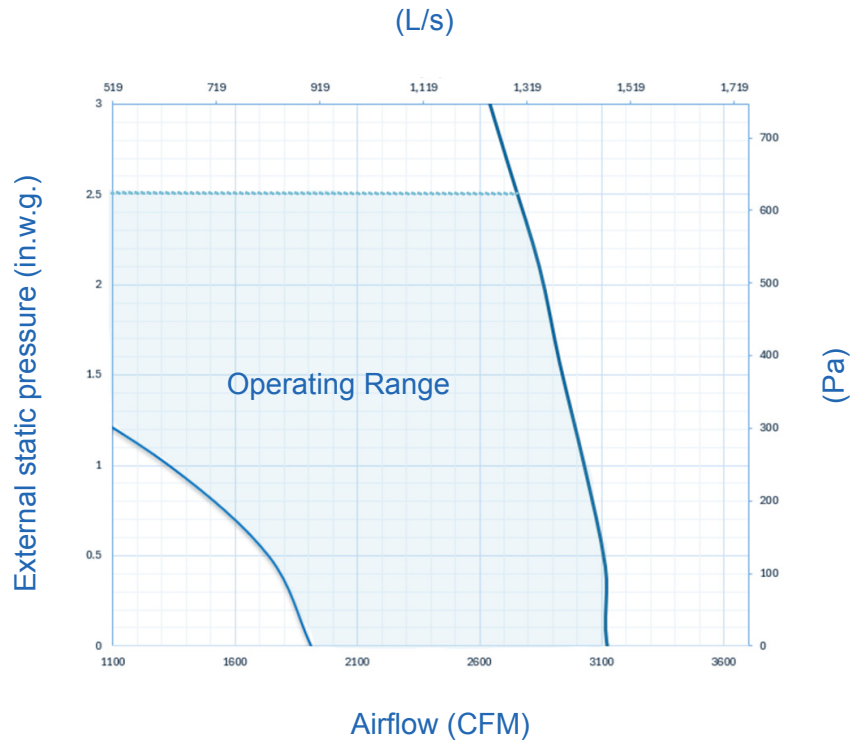
- Available power supply 208V/3ph/60Hz; 460V/3ph/60Hz; 575V/3ph/60Hz
- Integrated Bacnet MSTP controller kit **product code: 699626**
- Fuse-less disconnect switch (NEMA 4)
- 24V transformer for controls
- Single point of electrical connection
- Rooftop unit with connection capabilities to Daikin/ Samsung/Mitsubishi or other third-party VRFs.\*

\*Contact your local representative

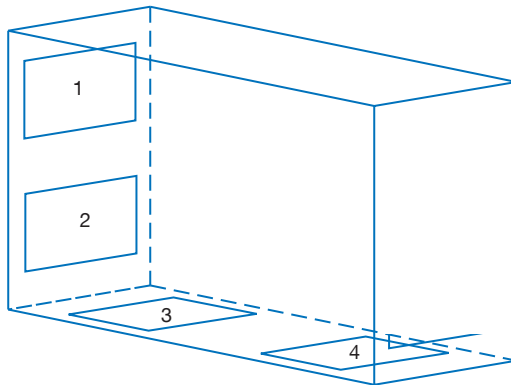


## RTU\_5Te : Dimensions (Standard - Inches)





## RTU\_5Te : Configuration and Weight



LEGEND	
1	Fresh air intake (SA)
2	Exhaust air (EA)
3	Exhaust air return (RA)
4	Fresh air distribution (SA)

RTU WEIGHT	
Unit Weight	1590 lb
Shipping Weight	1650 lb