



PRODUCT DESCRIPTION

The H150-TQG has been thoughtfully engineered for simple installation in apartments, condos, and small houses. The removable collars are top-mounted, which makes the unit both narrow and shallow enough to fit inside standard closets and other tight spaces.

KEY FEATURES

Electronically and independently adjustable supply and exhaust blowers (FLEXControl)

Gauge ports on the door for fast and reliable airflow readings

Non-dust-loading backward-inclined impellers on totally enclosed motors

Twist-in collars for easy flex-duct attachment

Easy access to core and filters for cleaning

Extremely durable polypropylene core

Recirculation defrost to maintain a neutral pressure in the home, and using only the four duct connections. No fifth duct connection required

RESIDENTIAL

HRV

H150-TQG

HEAT RECOVERY VENTILATOR
133 CFM at 0.20 in.w.g (ESP)



CORE

UNIT



Recovery Core

Material: Polypropylene

Casing

Material: Pre-painted 24-gauge galvanized steel

Drain Connection: Ø 3/8" (Ø 10 mm)

Duct Connections: Ø 5" (Ø 127 mm)

Insulation: Molded EPS

Width: 23-1/8" (587 mm)

Height: 16-3/4" (425 mm)

Depth: 12-3/8" (314 mm)

Weight: 32 lbs (15 kg); Shipping Weight: 40 lbs (18 kg)

Supply Damper: Motorized



Mounting

Suspended by chains with vibration-isolating springs

Wall-mounting accessory available (P/N 608575)



Electrical requirement

120 VAC, 60Hz, 1.85A, 145W

Cord Set: 48" (1219 mm) with ground



Frost control

Automatic timed recirculation, four port

Cycles controlled by a temperature sensor when the outdoor temperature drops below 23°F (-5°C)



Filters

Type : Two MERV6 filters (P/N 612409)

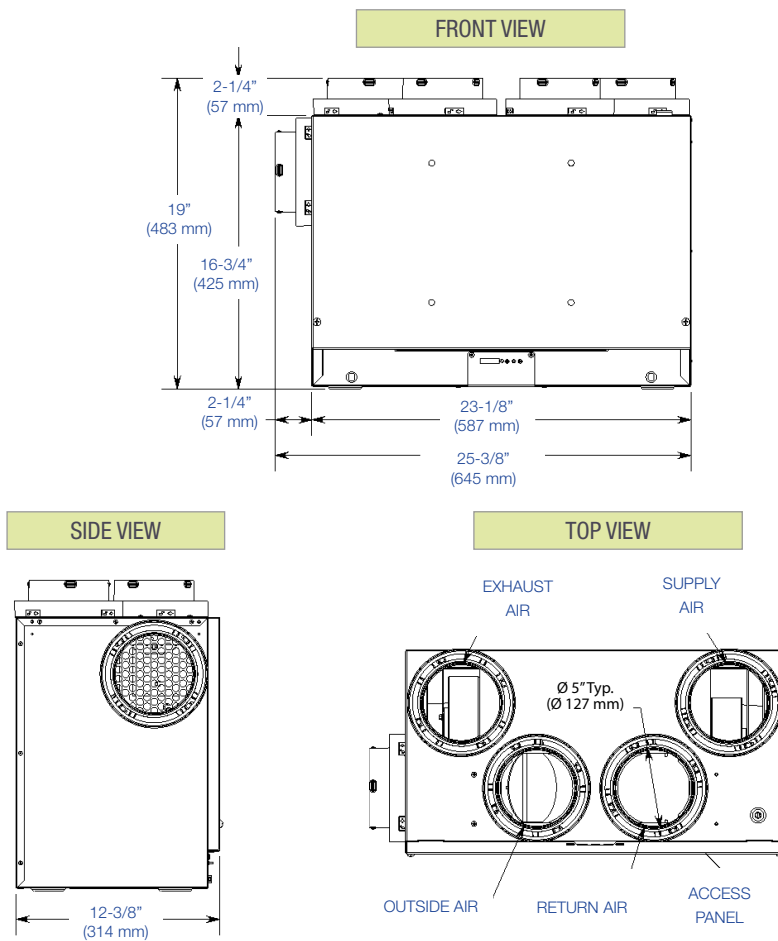
Option : Two MERV13 filters (P/N 612410)



Blowers

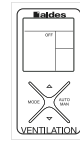
Motorized impellers (backward-inclined)

Dimensions

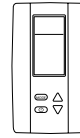


Controls

Low voltage dry contact (24VAC) for interlock with heating/cooling systems.



Digital Multifunction Control (# 611242) and (#611242-FC)



LCD Electronic Multifunction Control (P/N 611227)



20/40/60 Minute Timer (P/N 611228)



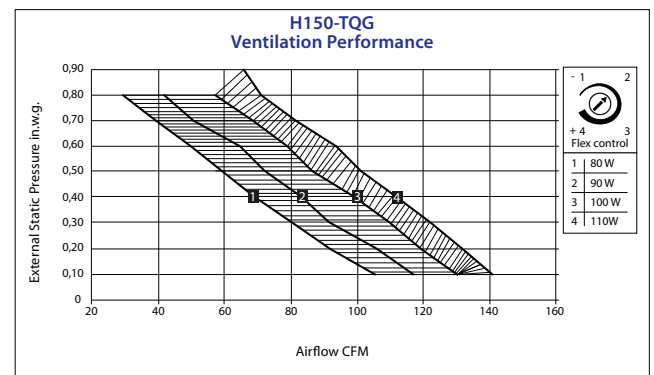
Speed Control (Low/Intermittent/High) (P/N 611229)



Mode Control (Recirculation) (P/N 611230)

Performance

Supply Temperature		Net Airflow		Power Consumed (W)	Sensible Recovery Efficiency	Adjusted Sensible Recovery Efficiency
°F	°C	CFM	L/s			
32	0	53	25	44	67%	73%
32	0	66	31	48	65%	70%
32	0	100	47	88	59%	65%
-13	-25	66	31	72	60%	63%



Project:		Architect:	
Location:		Engineer:	
Model #:		Contractor:	
Quantity:		Comments:	
Submitted By:			
Date:			

For more information, contact your Aldes sales advisor, visit aldes-na.com, call 1.800.255.7749, or find us on

