



PRODUCT DESCRIPTION

The H280-SRG heat recovery ventilator provides high-efficiency heat recovery in a compact, affordable package. The unit uses a robust, water-washable polypropylene core that can withstand a wide range of environmental conditions. The H280-SRG can exchange up to 284 CFM at 0.20 in.w.g (ESP), making it ideal for large home and small office applications.

KEY FEATURES

Electronically and independently adjustable supply and exhaust blowers (FLEXControl)

Gauge ports on the door for fast and reliable airflow readings

Non-dust-loading backward-inclined impellers on totally enclosed motors

Twist-in collars for easy flex-duct attachment

Easy access to core and filters for cleaning

Extremely durable polypropylene core

Recirculating defrost protects the core from freezing without putting the dwelling into negative-pressure

RESIDENTIAL

HRV

H280-SRG

HEAT RECOVERY VENTILATOR

284 CFM at 0.20 in.w.g (ESP)

Fait au
Canada

5 year
Warranty

Lifetime
Warranty

UNIT

CORE



Recovery Core

Material: Polypropylene

Casing

Material: Pre-painted 24-gauge galvanized steel

Drain Connection: Ø 3/8" (Ø 10 mm)

Duct Connections: Ø 6" (Ø 127 mm)

Insulation: 1" (25 mm) Fiberglass with FSK

Width: 31" (787 mm)

Height: 21-3/4" (552 mm)

Depth: 17-1/16" (433 mm)

Weight: 62 lbs (28 kg); Shipping Weight: 71 lbs (32 kg)

Supply Damper: Motorized

Exhaust Damper: Gravity



Mounting

Suspended by chains with vibration-isolating springs



Electrical requirement

120 VAC, 60 Hz, 2.89 A, 263 W

Cord Set: 48" (1219 mm) with ground



Frost control

Recirculation cycles controlled by a temperature sensor when outdoor temperatures fall below 23°F (-5°C).



Filters

Type : Two Aluminum (P/N: 612266)

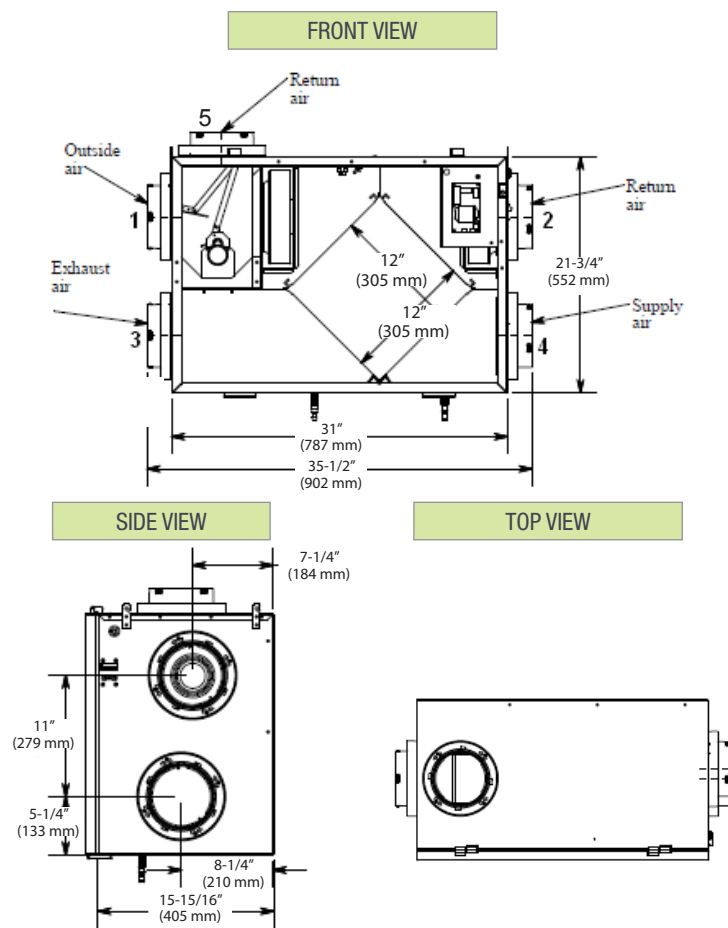
Option : Two Carbon (P/N: 612264), or High Efficiency/ MERV13 Equivalent (P/N: 612265)



Blowers

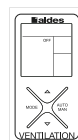
Two backward-inclined motorized impeller, direct-drive PSC, variable speed, external rotor

Dimensions

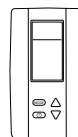


Controls

Low voltage dry contact (24VAC) for interlock with heating/cooling systems.



Digital Multifunction Control (#611242-FC)



LCD Electronic Multifunction Control (P/N 611227)



20/40/60 Minute Timer (P/N 611228)

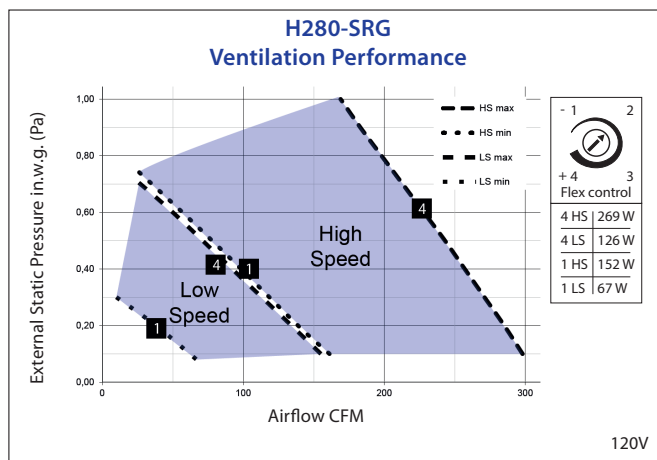


Speed Control (Low/Intermittent/High) (P/N 611229)



Mode Control (Recirculation) (P/N 611230)

Performance



Supply Temperature		Net Airflow		Power Consumed (W)	Sensible Recovery Efficiency	Adjusted Sensible Recovery Efficiency
°F	°C	PCM	L/s			
Heating						
32	0	64	30	80	75%	83%
32	0	78	38	88	72%	80%
32	0	117	55	134	66%	74%
-13	-25	68	32	105	65%	70%

Project:		Architect:	
Location:		Engineer:	
Model #:		Contractor:	
Quantity:		Comments:	
Submitted By:			
Date:			

For more information, contact your Aldes sales advisor, visit aldes-na.com, call 1.800.255.7749, or find us on

