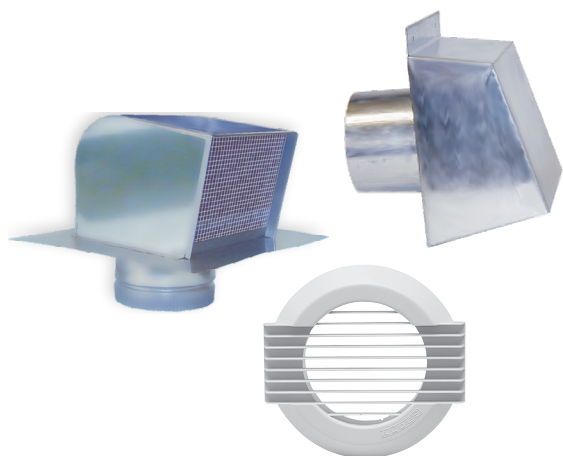




## ROOF CAPS, WALL HOODS, AND GRILLES

---



## ROOF CAPS, WALL HOODS, AND GRILLES

---

VENTILATION ACCESSORIES

TECHNICAL DOCUMENTATION

Aldes North America provides all the accessories you need to complete your ventilation system. These components are engineered to work with Aldes North America ventilation products for optional appearance and performance.

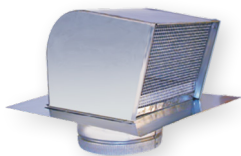
## ROOF CAPS

### HIGH-PERFORMANCE ROOF CAPS

- Minimize noise and pressure resistance.
- Removes moisture and condensation from the duct system.
- Low-profile, low-pressure design.
- All roof caps have backdraft dampers and removable screens.
- They can be installed on any roof pitch or shingling.
- Available in 4", 5", 6", 8", 10", and 12" sizes.
- Heavy-gauge galvanized steel or aluminum available.

### ROUND ALUMINUM ROOF CAPS

- Ideal vent-duct terminations for sloped or flat-roof penetrations.
- Impervious to weather intrusion, highly durable, and corrosion resistant.
- Eliminates the need for curbs on most flat-roof applications.
- Available in 4", 6", 8", 10", and 12" sizes.
- Optional 12" extensions are available for high snow-load areas.
- Cap includes a removable bird screen.



## SPECIALTY EXHAUST HOODS AND VENTS

### UNIVERSAL WALL/ SOFFIT EXHAUST VENT

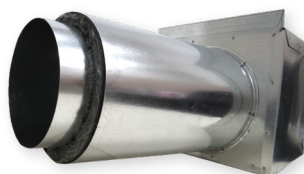
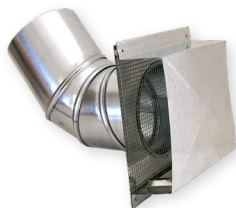
- The wall or soffit position is obtained by twisting the sleeve element.
- Available in 6" size.
- Heavy-gauge galvanized steel material.

### INSULATED VENT HOODS

- Double-wall construction with a 1/2" duct liner.
- Available in 6" size.
- Optional filter is available.
- Made of heavy-gauge galvanized steel.

### EXHAUST/ SUPPLY VENT

- Available in 5" or 6" diameters.
- Made of heavy-gauge galvanized steel with a white plastic cap.
- Cap includes a bird screen.





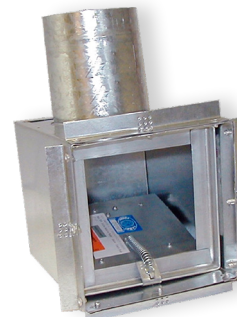
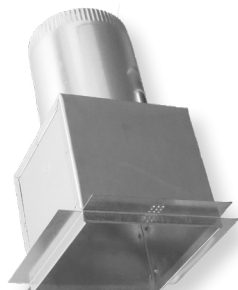
---

## REGISTER BOXES

---

- Register boxes incorporate an automatic, pressure independent balancing damper that regulates supply airflow in duct systems to constant levels. The passive control element (CAR3®) requires no electric or pneumatic power, sensors, and works solely off system pressure.
- Compensates for changes in duct pressure caused by stack effect, operable windows and doors, wind, loading filters, etc.
- Provides a low-cost solution to maintaining the correct airflow balance of ventilation systems, improving system performance and indoor air quality, and provides significant savings on annual operating costs.
- Galvanized steel register box with steel duct collar.
- 7 year warranty.

CEB3-WB / CSB3-WB  
CEB3-WS / CSB3-WS  
CEB3-CS / CSB3-CS  
CEB3-CS-F / CSB3-CS-F



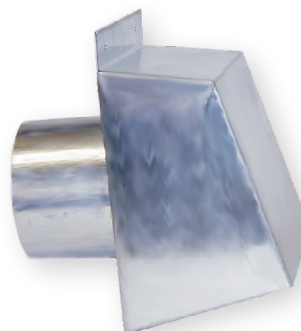
---

## WALL HOODS

---

### HIGH-PERFORMANCE WALL HOODS

- Designed to maximize airflow and minimize noise.
- Screened Wall Hoods are suitable for use in exhaust ventilation or dryer venting systems.
- Available with screens or dampers.
- Wall hoods with dampers feature magnetic closures to avoid flapping in the wind.
- Available in 4", 5", 6", 8", 10", and 12" sizes.
- Heavy-gauge galvanized steel.



---

## GRILLES

---

### DECO GRILLES

- Decoratively styled white plastic grille.
- Alternative to standard grilles.
- Available in 3", 4", and 5" sizes.



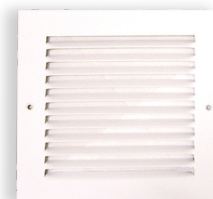
### STANDARD PLASTIC FILTER GRILLE

- Used for supply or exhaust.
- The 6" grille has a washable polyester filter.
- Available in 6" size.
- Made of white poly-plastic.



### GRILLES FOR REGISTER BOXES

- Flush-mount exhaust/supply grilles used with CEB3 and CSB3 Register Boxes.
- Available sizes: 8" x 4", 6" x 6", 8" x 8", and 10" x 10".
- Filters available.





For more information, contact your  
Aldes sales advisor, visit [aldes-na.com](http://aldes-na.com),  
or find us on



Aldes North America  
USA 800.255.7749 CAN 800.262.0916

0322 - Roof Caps, Wall Hoods, and Grilles Brochure  
©2022 American ALDES Ventilation Corporation and ALDES Canada. All Rights Reserved.  
Reproduction or distribution, in whole or in part, of this document, in any form or by any means, without the express written consent of American ALDES Ventilation Corporation and/or ALDES Canada, is strictly prohibited.  
The information contained within this document is subject to change without prior written notice.

