

IN-LINE DUCT FANS

A & AD Series Fans



#HealthyLiving

aldes

American Aldes' quiet, energy-efficient, external-rotor motors are perfect for improving indoor air quality while saving energy and reducing operating costs. Designed for moderately sized ventilation applications, these fans are easy to install and require no transition pieces.

"A" Series Duct Fan

American Aldes "A" Series centrifugal-type exhaust/supply fans are specifically designed for moderately sized ventilation applications. The fans can be mounted at any angle at any point along the duct work. The straight-through airflow design allows for easy installation. Fans are rated for both indoor and outdoor use. By using American Aldes mounting clamps (optional accessory), the fan can easily be removed from duct work for service.

Fans are constructed in accordance with standard dimensions for spiral duct, eliminating the need for transition pieces. Fan motors are capable of operating in air stream temperatures of 140°F. Motor bearings are the permanently sealed, self-lubricating ball type. All fans are 100-percent speed controllable through a decrease in the voltage by using a solid-state or transformer-type control. "A" Series fans are available as standard or high-performance models in six different sizes.

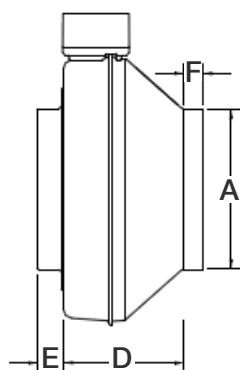


UL LISTED
DUCT FANS
(E77545)

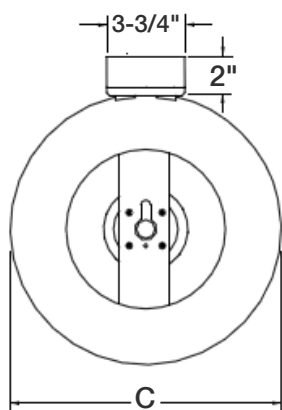


Dimensions

SIDE VIEW



TOP VIEW



PART NUMBER	MODEL	A	C	D	E	F
99 029	A-4	4	8-1/2	6-1/2	1	1
99 040	A-4HP	4	9-3/4	6-15/16	1	1
99 010	A-5	5	8-5/8	6-1/2	1	1
99 042	A-5HP	5	9-3/4	6	1-1/8	1-1/8
99 011	A-6	6	11-3/8	6-1/4	1	7/8
99 041	A-6HP	6	13-1/8	7	1	1
99 012	A-8	8	13-1/4	6	1	1
99 013	A-8HP	8	13-1/4	6	1-1/8	1
99 014	A-10	10	13-1/4	4-3/4	1-1/8	1
99 039	A-10HP	10	13-1/4	4-13/16	1-1/4	1
99 015	A-12	12	16	6-11/16	1-1/4	1
99 038	A-12HP	12	16	6-11/16	1-1/2	1

All dimensions shown in inches.

"AD" Series Duct Fan

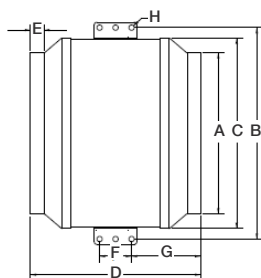
American Aldes "AD" Series duct fans are direct-drive, centrifugal exhaust/supply fans that are ideal for moderately sized ventilation applications. The mixed-flow impeller combines the compact size of axial fans with the higher-pressure characteristics of centrifugal blowers. Additionally, these fans offer substantially quieter operation and are easier to install than axial fans. "AD" fans can be mounted at any angle and in any point in the duct work. Their straight-through airflow design configuration, and the ease with which they can be removed, facilitate both installation and service.

"AD" Fans are designed to operate in conditioned airstreams with temperatures up to 140°F. Motor bearings are the permanently sealed, self-lubricating ball type. All fans are 100-percent speed controllable through a decrease in voltage with either a solid-state or transformer type of control. "AD" Series fans are available as standard or high-performance models in seven different sizes.

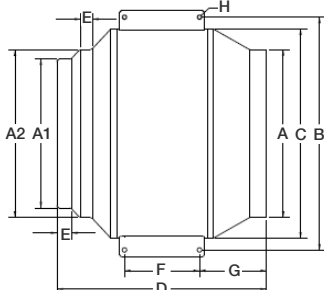


Dimensions

MODELS AD-8HP
THROUGH AD-12



MODELS AD-12HP
THROUGH AD-18



PART NUMBER	MODEL	A	A1	A2	B	C	D	E	F	G	H
99 650	AD-8HP	8	--	--	14	12-1/2	15-1/2	3/4	2-3/8	6-1/8	3/8
99 651	AD-10	10	--	--	14	12-1/2	15-1/2	3/4	2-3/8	5	3/8
99 652	AD-10HP	10	--	--	15-5/8	14	15	3/4	2-3/8	6-3/8	3/8
99 654	AD-12	12	--	--	15-5/8	14	12-1/2	3/4	2-3/8	5-1/8	3/8
99 655	AD-12HP	12	12	14	20-1/4	17-7/8	18-7/8	7/8	4	8-3/4	3/8
99 657	AD-14	14	12	14	20-1/4	17-7/8	17-1/4	1	1	6-3/4	3/8
99 658	AD-14HP	14	14	16	22-1/8	19-3/4	20-1/4	1-1/2	1-1/2	8-3/4	3/8
99 659	AD-16	16	14	16	22-1/8	19-3/4	18-3/4	1-1/2	1-1/2	7-1/8	3/8
99 660	AD-16HP	16	16	18	24-3/8	22-1/8	23-1/4	1-1/4	1-1/4	8-1/2	1/2
99 661	AD-18	18	16	18	24-3/8	22-1/8	21-3/4	1-1/4	7-7/8	7	1/2

All dimensions shown in inches.

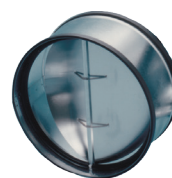
Accessories



Algrilles: White plastic. Removable for easy cleaning. For exhaust/supply air. 3" to 8" sizes.



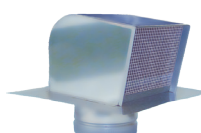
Controls: Timers, variable-speed controls, dehumidistats, and other options provide airflow control for any application.



Backdraft Damper: Spring loaded. Vertical or horizontal mount. Galvanized sheet metal construction. 4" to 16" sizes.



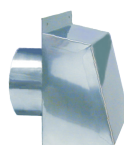
Vibration Isolating Fan Clamps: Reduce vibration in rigid ductwork installations. Two clamps required per fan. 4" to 12" sizes.



Roof Cap: Special high-performance pressure-drop roof cap with backdraft damper and removable screen. Copper, Galvanized, Aluminum, or Stainless Steel. 4" to 12" sizes.



ZRT: Zone Register Terminals provide flexibility and dynamic control to central exhaust or supply ventilation systems.



Wall Hood: Special high-performance wall cap. Copper, Galvanized, or Stainless Steel. 4" to 12" sizes.

www.aldes.us

To find out more about In-Line Duct Fans and other related products visit
www.aldes.us/fans

Distributed By:



American ALDES Ventilation Corporation
4521 19th Street Court East, Suite 104 - Bradenton, FL 34203 USA
Toll-Free: 1.800.255.7749 - Fax: 941.351.3442

© 2019 American ALDES Ventilation Corporation. Reproduction or distribution, in whole or in part, of this document, in any form or by any means, without the express written consent of American ALDES Ventilation Corporation, is strictly prohibited. The information contained within this document is subject to change without prior written notice

