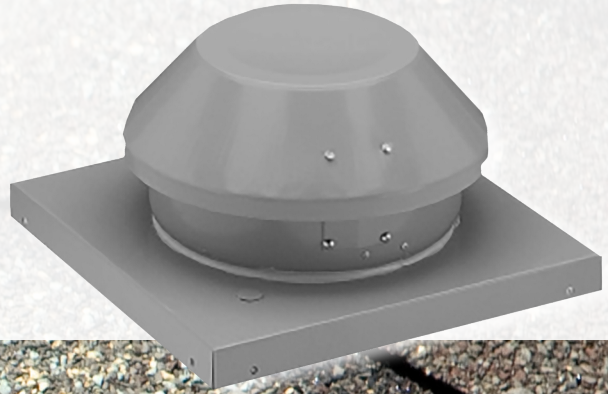


Roof Mount Ventilators

RMV SERIES



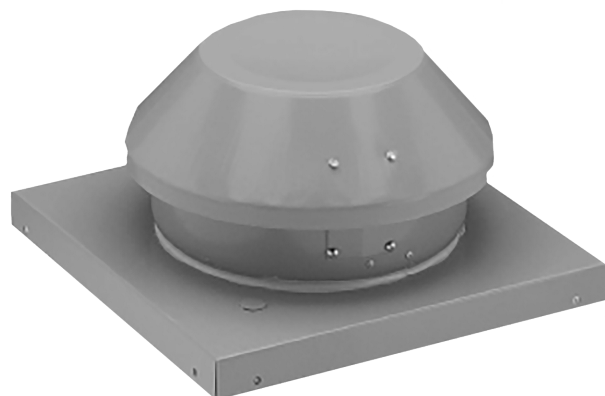
#HealthyLiving



RMV

RMV-A Series Roof/Wall-Mount Ventilator

Centrifugal-type roof/wall exhausters suitable for residential or light-commercial applications. Fans are designed for easy installation and can be mounted at any angle. RMV-A Series fans are approved for use as remote-mount exhausters with residential range hoods. Motors are capable of operating in air stream temperatures of up to 140°F. Fans are provided with their own base for mounting to a roof curb or flat flashing on shingle roofs. All units are 100% speed controllable through a decrease in voltage using either a solid-state or transformer-type speed control. RMV exhausters can be supplied with optional equipment, including integral disconnect switch, duct mounting clamps, and backdraft dampers. Five models are available with airflow ranging from 100 to 1000 CFM. All units are backed by American ALDES' three-year warranty.



AIR PERFORMANCE DATA

MODEL	VOLTS	NOMINAL RPM	MAX WATTS	MAX AMPS	AIRFLOW (CFM vs. Ps in. W.G.)											MAX Ps.
					0.00"	0.125"	0.25"	0.375"	0.50"	0.75"	1.00"	1.25"	1.50"	2.0"	2.5"	
RMV-A4/5	115	3040	19	0.18	116	105	92	79	65	36	1	--	--	--	--	--
RMV-A6	115	2700	87	0.80	227	213	199	184	169	134	106	80	5	--	--	1.84"
RMV-A8HP	115	2800	153	1.40	409	382	356	331	307	259	212	170	130	43	--	2.23"
RMV-A10HP	115	3250	394	3.60	753	738	721	705	690	656	622	586	548	467	383	4.03"
RMV-A10HPT	115	2950	531	4.86	1008	979	949	919	890	831	766	695	609	429	317	3.17"

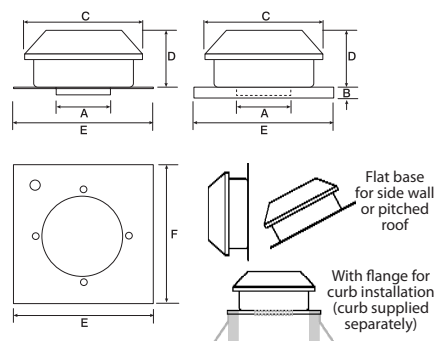
Performance is for installation type 1 (free inlet, free outlet). Speed (RPM) shown is nominal. Performance is based on actual speed of test. Performance ratings do not include the effects of accessories.

DIMENSIONS

MODEL	A	B	C	D	E	F
RMV-A4/5**	5"	--	10-15/16"	6"	15-1/2"	15-1/2"
RMV-A4/5C* **	5"	1-1/2"	10-15/16"	6"	15-1/2"	15-1/2"
RMV-A6	6"	--	13-15/16"	6-1/4"	15-1/2"	15-1/2"
RMV-A6C*	6"	1-1/2"	13-15/16"	6-1/2"	15-1/2"	15-1/2"
RMV-A8HP*	8"	--	16-9/16"	5-15/16"	20"	20"
RMV-A8HPC*	8"	1-1/2"	16-9/16"	5-15/16"	20"	20"
RMV-A10HP	10"	--	20-13/16"	11-1/2"	20"	20"
RMV-A10HPC*	10"	1-1/2"	20-13/16"	11-1/2"	20"	20"
RMV-A10HPT	10"	--	20-13/16"	12-11/16"	20"	20"
RMV-A10HPTC*	10"	1-1/2"	20-13/16"	12-11/16"	20"	20"

**Includes 5-4" reducer to allow use of 4" duct. *Units for installation on curbs.

WARNING! DO NOT use in HAZARDOUS ENVIRONMENTS where fan's electrical system could provide ignition to combustible or flammable materials.



American ALDES Ventilation Corporation
4521 19th Street Court East, Suite 104 - Bradenton, FL 34203 USA
Tel: 941.351.3441 - Fax: 941.351.3442 - Toll-Free: 1.800.255.7749

© 2019 American ALDES Ventilation Corporation. Reproduction or distribution, in whole or in part, of this document, in any form or by any means, without the express written consent of American ALDES Ventilation Corporation, is strictly prohibited. The information contained within this document is subject to change without prior written notice.

