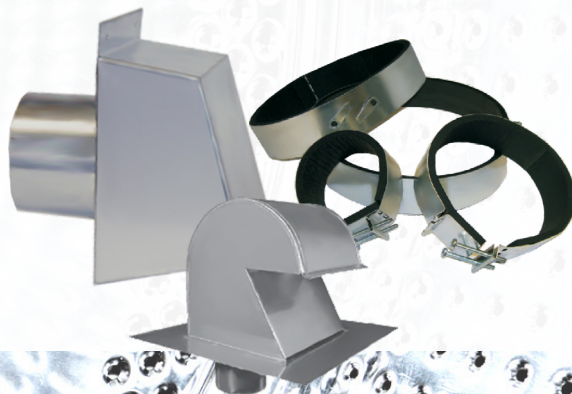


DRYER VENTING

Dryer Vent System Accessories



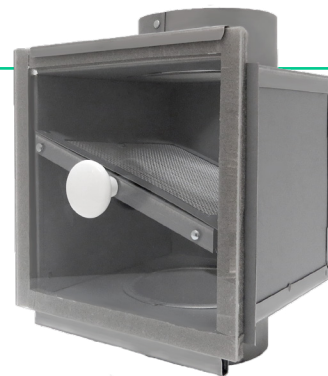
#HealthyLiving

aldes

A variety of accessories, including vent boxes, roof caps, wall hoods, and lint traps are available to provide support to Dryer Booster Fans. Their unique design allows lint to flow through the duct easily, compensating for system duct loss due to long duct runs.

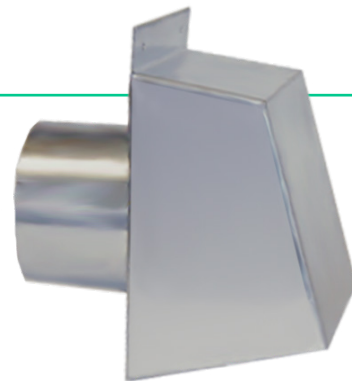
In-Line Lint Trap

American Aldes In-Line Lint Trap for dryer vents is a secondary lint trap that is intended for use when required in a Dryer Booster Fan Application. Additionally, the In-Line Lint Trap can be used in Dryer Booster Fan applications where excessive dryer lint is likely. The In-Line Lint Trap is not intended for use without a Dryer Booster Fan, unless the application is approved by the dryer manufacturer and/or the local building inspector. It is for drywall installation and can be mounted in a ceiling or wall.



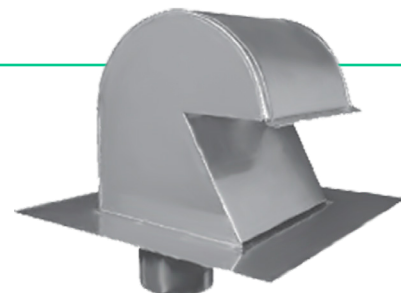
Standard Dryer Wall Hood

American Aldes Standard Dryer Wall Hoods are engineered to accommodate high airflow pressure and velocities found in dryer vent systems. All Standard Dryer Wall hoods have gravity dampers. Each Dryer Wall Hood is designed to maximize airflow and minimize noise. The magnetic-catch damper ensures a tight closure when the fan is not running and eliminates damper flutter in windy conditions. These hoods should be used when backdraft dampers are not present at other locations within the duct system. Dryer Wall Hoods are available in heavy-gauge galvanized steel, stainless steel, or copper.



Dryer Roof Cap

American Aldes Dryer Roof Cap is for 4" diameter duct connections. A gravity backdraft damper is built into the roof cap. Vent a clothes dryer to the roof without letting rain or wind into the duct.



Dryer Vent Box

The American Aldes Dryer Vent Box is a recessed dryer vent box that allows the dryer to mount flush against the wall. In the past, dryer venting was inefficient due to friction-causing bends in the flexible hose behind the dryer. These restrictive airflow bends keep the appliance far away from the wall, and they are the primary source of lint build-up in the flex duct, which is a fire hazard. Similar to the commonly used recessed washing-machine-connection box, the American Aldes Recessed Dryer Vent Box will provide many benefits to the contractor and homeowner.



Cape Backdraft Dampers

American Aldes Cape Backdraft Dampers are designed to overcome the inefficiencies and limitations of traditional gravity or butterfly dampers. It incorporates a special fabric sleeve attached to the interior of a metal sleeve. The fabric sleeve will allow air to pass through in the desired direction of flow with minimal reduction in airflow. The fabric collapses in the presence of back pressure, preventing unwanted reverse airflow. Cape Backdraft Dampers are ideal in dryer ducts.



Vibration Isolation Fan Clamps

American Aldes Vibration Isolation Fan Clamps are intended to simplify fan installation and isolate fan vibration from rigid metal duct. Fan clamps are convenient in installations where regular removal of the fan is necessary for inspection and cleaning. Fan Clamps are available in sizes 4" through 12" to fit corresponding duct sizes. Fan Clamps are equipped with integral hanging tabs. When used with model "A" Series In-Line Duct Fans, these tabs can be used to suspend the fans. If used for that purpose, two clamps are required for each fan suspension.



PART NUMBER	DESCRIPTION
99 060	Dryer Vent Box - for 2" x 4" wall (use when dryer vent runs up the wall)
99 061	Dryer Vent Box - for 2" x 6" wall (use when dryer vent runs up the wall)
99 063	Dryer Vent Box - for 2" x 4" wall (use when dryer vent runs down the wall)
99 064	Dryer Vent Box - for 2" x 6" wall (use when dryer vent runs down the wall)
99 170	4" Vibration Isolation Fan Clamps (Set of 2)
99 059	In-Line Lint Trap for Dryer Vent
99 504	4" Diameter Cape Backdraft Damper (special damper for use with dryers)
99 404	Standard Dryer Wall Hood - Galvanized Steel (with gravity damper for 4" diameter duct)
99 404SS	Standard Dryer Wall Hood - Stainless Steel (with gravity damper for 4" diameter duct)
99 404COP	Standard Dryer Wall Hood - Copper (with gravity damper for 4" diameter duct)
99 041	Dryer Roof Cap (with backdraft damper for 4" diameter duct)

www.aldes.us

To find out more about Dryer Vent Systems and other related products visit www.aldes.us/dryer-venting

Distributed By:



American ALDES Ventilation Corporation
4521 19th Street Court East, Suite 104 - Bradenton, FL 34203 USA
Tel: 941.351.3441 - Fax: 941.351.3442 - Toll-Free: 1.800.255.7749

© 2019 American ALDES Ventilation Corporation. Reproduction or distribution, in whole or in part, of this document, in any form or by any means, without the express written consent of American ALDES Ventilation Corporation, is strictly prohibited. The information contained within this document is subject to change without prior written notice

