



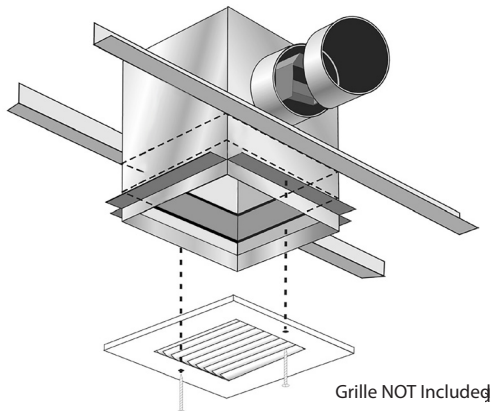
AIRFLOW & ZONE CONTROLS
CERB-CFS-II/CERB-CFB-II
CSRB-CFS-II/CSRB-CFB-II

INSTALLATION
OPERATION
MAINTENANCE

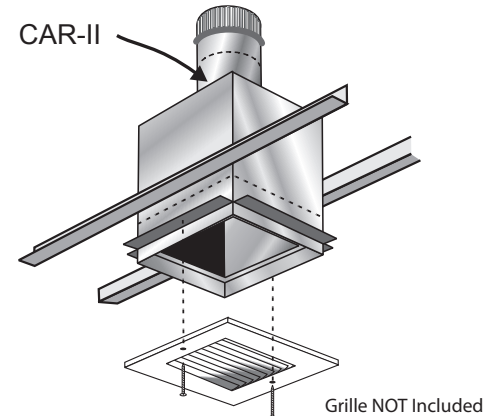
Constant Exhaust/Supply Register Box with Ceiling Radiation Damper

READ AND SAVE THESE INSTRUCTIONS

CERB-CFS-II



CSRB-CFB-II



DESCRIPTION

American Aldes Register Boxes with integral ceiling radiation damper and constant airflow regulator are designed to provide a complete terminal package that is self balancing and meets code requirements for applications requiring ceiling radiation dampers. Both Supply and Exhaust models are available with and without grilles. The optional constant airflow regulator is designed to provide a constant airflow rate within a pressure range of 0.2 to 0.8 in. w.g.

WARNING

1. Use this unit only in the manner intended by the manufacturer. If you have any questions, contact the manufacturer.
2. Sufficient air is needed for proper combustion and exhausting of gases through the flue (chimney) of fuel-burning equipment to prevent backdrafting. Follow the heating equipment manufacturer's guidelines and safety standards, such as those published by the National Fire Protection Association (NFPA), and the American Society of Heating, Refrigerating and Air-Conditioning Engineers (ASHRAE), and the local code authorities.
3. In addition to the following manufacturer's instructions, it is necessary to comply with federal, state, and local government codes.
4. Installation work must be done by qualified person(s) in accordance with all applicable codes and standards, including fire-rated construction.
5. When cutting or drilling into wall or ceiling, do not damage electrical wiring and hidden utilities.
6. Protect interior of assembly from wall/ceiling texturing and painting overspray.

Inspect the carton upon receipt to ensure the unit has not been damaged in transit. If damaged, it is the responsibility of the recipient to file a damage claim with the carrier. American

ALDES Ventilation Corporation is not responsible for damage incurred during shipment.

Handle the unit with care to prevent damage to the housing and other components. Store the unit indoors if possible. If outdoor storage is required, protection against moisture and dirt is necessary.

SYSTEM DESIGN

Satisfactory performance of a central ventilation system requires:

- Proper integration of all the components, compatible grilles, and wall/roof caps;
- Proper duct design for friction losses;
- Consideration of acoustic and vibration properties of the fan and its mounting;
- Consideration of acoustic properties of the grilles;
- Consideration of the mode of operation, whether continuous or automatically controlled by dehumidistat, timer, or occupancy sensor;
- Installation in a heated or unheated space, with consideration for the potential of condensation in the ducting or fan housing.

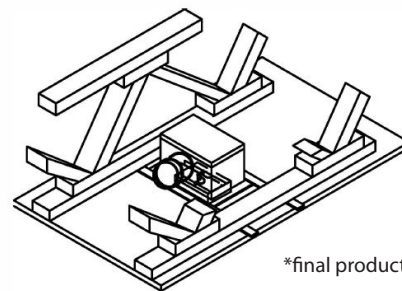
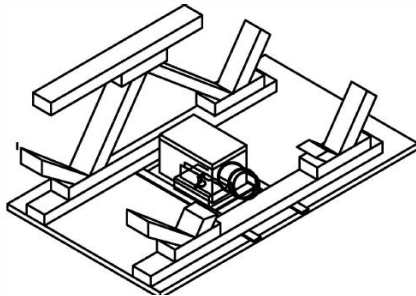
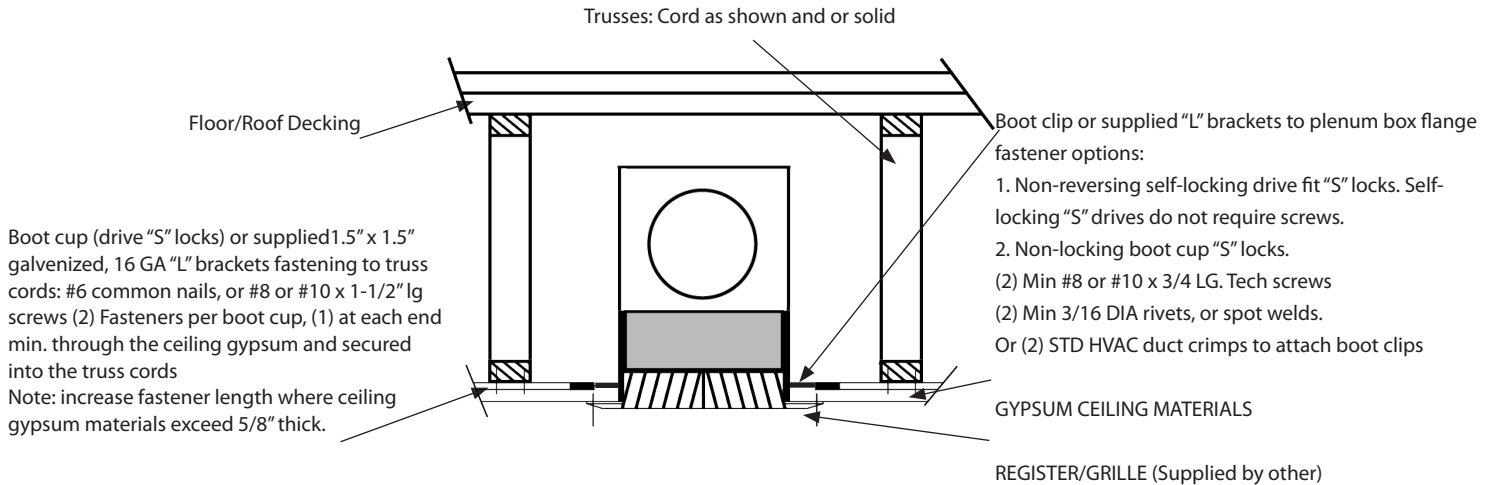
MAINTENANCE

- Clean the grille and filter monthly (if so equipped).
- The CAR-II (if so equipped) needs no maintenance when used in normal conditions. There is no risk of dust deposit or obstruction because the CAR-II has no airways subject to clogging. If the intended application includes air heavily loaded with grease or dust, periodic cleaning may be required.

WARRANTY See enclosed warranty document.

FOR REGISTER/GRILLE AND DUCTED APPLICATIONS

3 HOUR RATED ASSEMBLIES FOR USE IN
FLOOR/CEILING, ROOF/CEILING: TRUSS/GYPSUM CONSTRUCTION
UL DESIGN L-563, L-585, P-544, P-547



*final product may vary from graphic shown

Notes: SIDE OUTLET THRU TRUSS CORD

SIDE OUTLET PARALLEL TO TRUSSES

1. Measure the actual truss centers and add approx. 6" to determine boot clip lengths. (2) required per box
2. Drive (2) Self Locking "S" Boot Clips to the plenum box flange centering the plenum box as required. Where required to insure permanent attachment, fasten boot clips to the plenum box using the fasteners listed below.

Note: When Non-Drive boot clips or supplied 1.5" x 1.5" galvanized, 16 gauge "L" brackets are used, fasten boot clips to the plenum box flange using a minimum of (2) #8 or #10 x 3/4 Lg sheet metal screws, (2) 3/16" diameter rivets, or (2) spot welds, for each boot clip.

3. Boot Clips or "L" brackets are fastened to joists or other structural members with a minimum of two fasteners for each mounting point using #6 common nails or #8/#10 x 1-1/2" min. lg screws.

Note: Increase fastener length where gypsum/drywall ceiling materials exceed 5/8" thick.

4. The clearance between each side of the ceiling radiation damper and the duct drop shall be 1/8 inch maximum.
5. Steel or Aluminum grille or diffuser to be attached to the duct drop or ceiling damper using #8 by 1/2 inch long sheet metal screws.

IMPORTANT NOTES: REGISTER BOX/DROP DUCT INSTALLATIONS MUST CONFORM TO LOCAL AUTHORITY REQUIREMENTS FASTENERS MUST NOT INTERFERE WITH THE DAMPER BLADES OPERATION.

NOTE: ALL INSTALLATIONS ARE SUBJECT TO LOCAL AUTHORITY APPROVAL PRIOR TO ORDERING AND INSTALLING DAMPERS.

© 2017 American ALDES Ventilation Corporation. Reproduction or distribution, in whole or in part, of this document, in any form or by any means, without the express written consent of American ALDES Ventilation Corporation, is strictly prohibited. The information contained within this document is subject to change without prior written notice.