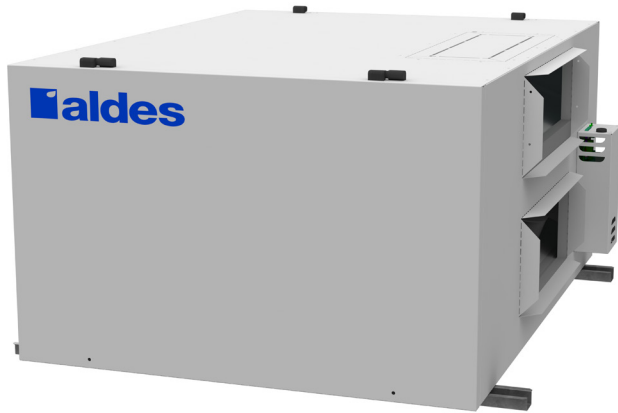




LIGHT COMMERCIAL
H1100-Fi & H1100-Ri
Heat Recovery Ventilator
200-1425 CFM Range

PRODUCT
SPECIFICATIONS
& TECHNICAL
DATA



H1100-Fi & H1100-Ri

The H1100 heat recovery ventilator provides high-efficiency heat recovery. The unit uses a robust, water-washable polypropylene core that can withstand a wide range of environmental conditions. The H1100 produces approximately **1340 CFM** at 0.20 in.w.g (ESP). It is powerful enough for restaurants, offices, and other small businesses.

The H1100 is ideal for cold-weather applications. The H1100-Fi shuts down the fan for the outdoor air supply during defrost cycles, while the H1100-Ri uses a fifth port with a motorized damper to defrost the core with recirculated warm air from inside the building.

FEATURES

- Plate-type polypropylene cores
- Quiet operation
- Multiple filter options
- Efficient and economical operation
- Indoor application

CASING

Material: Painted galvanized steel
Insulation: 1" R4 rated
Drain Connection: Ø 1/2" (Ø 13 mm)
Duct Connections: 20" x 8" (508 mm x 203 mm)
Width: 36-1/4" (921 mm)
Height: 23-7/8" (606 mm)
Depth: 47-1/4" (1200 mm)
Unit Weight: 206 lbs (93 kg); 216 lbs (98 kg) with recirculation
Shipping Weight: 261 lbs (118 kg)
271 lbs (193 kg) with recirculation

PLATE EXCHANGER

Standard: Polypropylene (sensible heat transfer)
Quantity: 3
Pitch: 0.16" (4 mm)
Dimensions: 12" x 12" x 15" (305 mm x 305 mm x 381 mm)



MOUNTING

Supplied with base rails. Support rod by others.

BLOWERS

Quantity: 4
Type: Backward-inclined motorized impeller, direct-drive PSC, variable speed, external rotor

FILTERS

Number: 6
Type: Aluminum (P/N: 683951)
Optional: MERV 8 (P/N: 683952), Carbon (P/N: 683953), or High Efficiency/MERV13 Equivalent (P/N: 683954)

Additional Air Pressure Drop with Optional Filters				
Filter Type	Airflow CFM (m³/h)			
	500 (850)	800 (1360)	1100 (1870)	1400 (2380)
MERV 8	0.04	0.08	0.15	0.22
Carbon	0.04	0.08	0.15	0.22
High Efficiency	0.22	0.35	0.48	0.63

ELECTRICAL REQUIREMENTS

120 VAC, 60 Hz, 10.5 A

FROST CONTROL

Cycles controlled by a temperature sensor when outdoor temperatures fall below 23°F (-5°C).

- Standard: Exhaust Defrost (H1100-Fi)
- Optional: Recirculation Defrost (H1100-Ri)

CONTROLS

24 VAC, 10 VA output for supply and exhaust dampers
Low-voltage dry contact (24 VAC, 20 VA) for:

- Occupancy Control (start/stop)
- Fan Interlock (NO and NC)
- Speed Selection
- Exhaust/Recirculation (with H1100-Ri)

Compatible With:

- Digital Multifunction Control (P/N: 611242FC)
- Mode Control (exchange or recirculation) (P/N: 611230)
- Humidity Control (P/N: 611224)
- Speed Control (Low/Intermittent/High) (P/N: 611229)
- 20/40/60 Minute Timer (P/N: 611228)

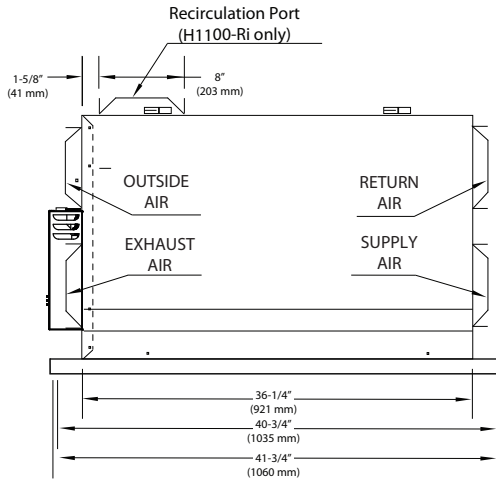
APPROVALS

Meets Standards:
• UL 1812 and C22.2 no113

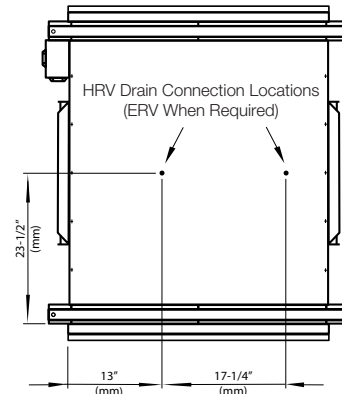
Listed:



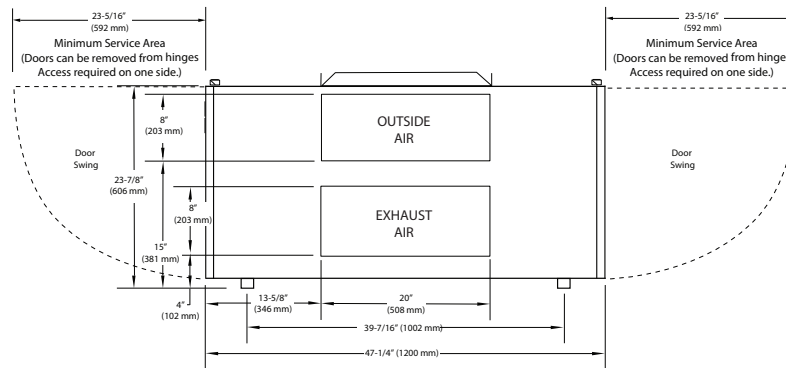
Dimensions



FRONT VIEW

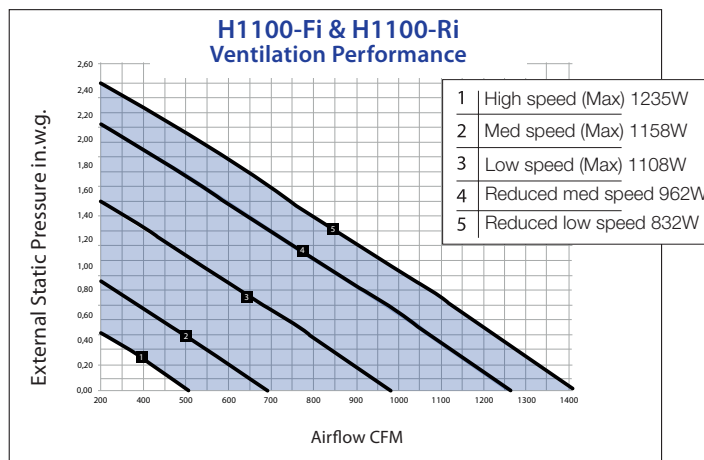


BOTTOM VIEW



SIDE VIEW

Performance



	Sensible Recovery %
100 % Air Flow Cooling	46%
75 % Air Flow Cooling	48%
100 % Air Flow Heating	45%
75 % Air Flow Heating	48%
AHRI Core Reference Number	8284038

© 2018 American ALDES Ventilation Corporation. Reproduction or distribution, in whole or in part, of this document, in any form or by any means, without the express written consent of American ALDES Ventilation Corporation, is strictly prohibited. The information contained within this document is subject to change without prior written notice.

American ALDES Ventilation Corporation • 4521 19th Street Court East, Suite 104 • Bradenton, FL 34203 – USA
941.351.3441 • 800.255.7749 • 941.351.3442 (fax) • info@americanaldes.com • www.aldes.us