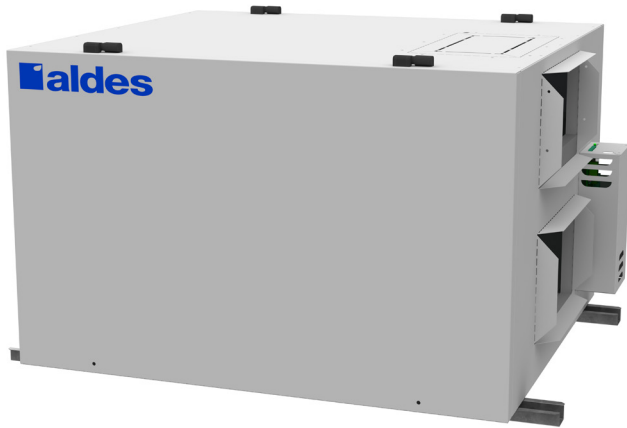




LIGHT COMMERCIAL
E1100L-Fi-EC & E1100L-Ri-EC
 Energy Recovery Ventilator
 300-1175 CFM Range

PRODUCT
 SPECIFICATIONS
 & TECHNICAL
 DATA



E1100L-Fi-EC & E1100L-Ri-EC

The E1100L-Fi-EC and E1100L-Ri-EC energy recovery ventilators provide up to 1175 CFM of fresh outdoor air while exhausting stale indoor air. The units make use of Aldes' AHRI Certified High Latent Transfer enthalpic cores that deliver superior moisture transfer and can be used in any climate zone. The highly efficient and quiet EC motors use on average 50-75% less electricity than typical PSC motors, significantly increasing return on investment.

The E1100L-Fi-EC and E1100L-Ri-EC is recommended for smaller non-residential spaces or dedicated zones within larger buildings, such as classrooms, common areas of residential complexes and indoor parking garages.

Designed for versatile indoor installation, Aldes light commercial ventilators can fit almost anywhere and still provide easy access to the internal components with removable access doors on both sides. The units also offer a choice of five continuous operation speeds and ademand-controlled high-speed exchange mode.

CASING

Material: Painted galvanized steel
 Insulation: 1" R4 rated
 Drain Connection: Ø 1/2" (Ø 13 mm)
 Duct Connections: 20" x 8" (508 mm x 203 mm)
 Width: 36-1/4" (921 mm)
 Height: 23-7/8" (606 mm)
 Depth: 47-1/4" (1200 mm)
 Unit Weight: 204 lbs (93 kg); 214 lbs (97 kg) with recirculation
 Shipping Weight: 259 lbs (117 kg)
 269 lbs (122 kg) with recirculation

PLATE EXCHANGER

Standard: High Latent Transfer
 (sensible and latent heat transfer)

Quantity: 3
 Pitch: 0.10" (2.5 mm)
 Dimensions: 12" x 12" x 15" (305 mm x 305 mm x 381 mm)



MOUNTING

Supplied with base rails. Support rod by others.

BLOWERS

Quantity: 4
 Type: Backward-inclined motorized impeller, direct-drive EC Motors, variable speed, external rotor

FILTERS

Number: 6
 Type: Aluminum (P/N: 683901)
 Optional: MERV 8 (P/N: 683952), Carbon (P/N: 683953), or High Efficiency/MERV13 Equivalent (P/N: 683954)

Additional Air Pressure Drop with Optional Filters				
Filter Type	Airflow CFM (m³/h)			
	500 (850)	800 (1360)	1100 (1870)	1400 (2380)
MERV 8	0.04	0.08	0.15	0.22
Carbon	0.04	0.08	0.15	0.22
High Efficiency	0.22	0.35	0.48	0.63

ELECTRICAL REQUIREMENTS

208-230 VAC, 60 Hz, 5.6 A
 Supplied with 6' power cord with NEMA 6-15 plug

FROST CONTROL

Cycles controlled by a temperature sensor when outdoor temperatures fall below 14°F (-10°C).

- Standard: Exhaust Defrost (E1100L-Fi-EC)
- Optional: Recirculation Defrost (E1100L-Ri-EC)

CONTROLS

24 VAC, 10 VA output for supply and exhaust dampers
 Low-voltage dry contact (24 VAC, 20 VA) for:

- Occupancy Control (start/stop)
- Fan Interlock (NO and NC)
- Speed Selection
- Exhaust/Recirculation (with E1100L-Ri-EC)

Compatible With:

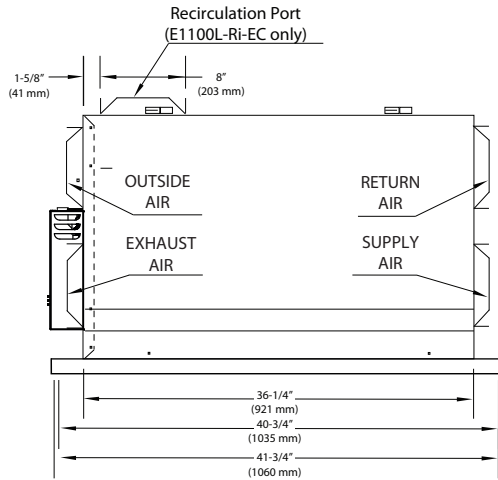
- Digital Multifunction Control (P/N: 611242FC)
- Mode Control (exchange or recirculation) (P/N: 611230)
- Humidity Control (P/N: 611224)
- Speed Control (Low/Intermittent/High) (P/N: 611229)
- 20/40/60 Minute Timer (P/N: 611228)

APPROVALS

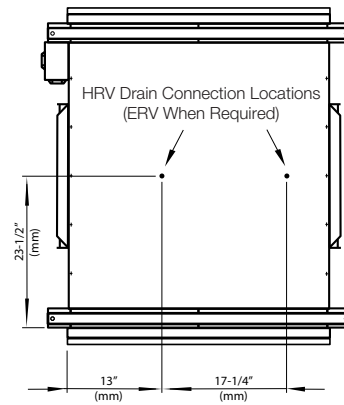
Meets Standards:
 • UL 1812 and C22.2 no113



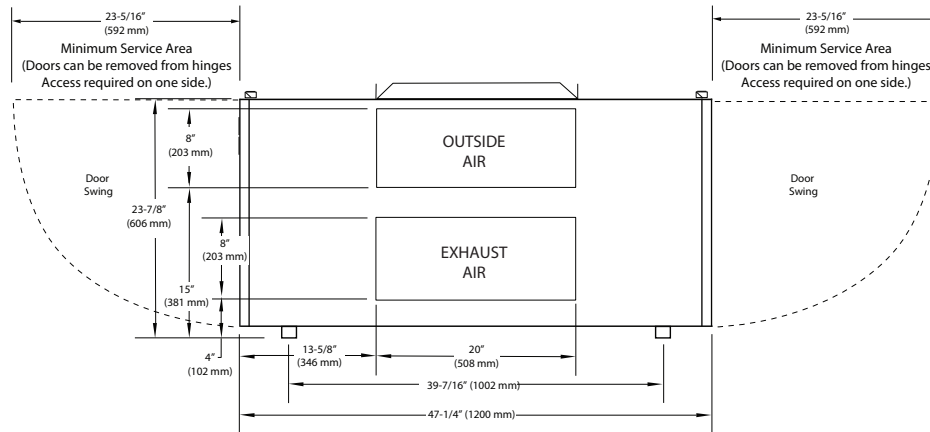
Dimensions



FRONT VIEW

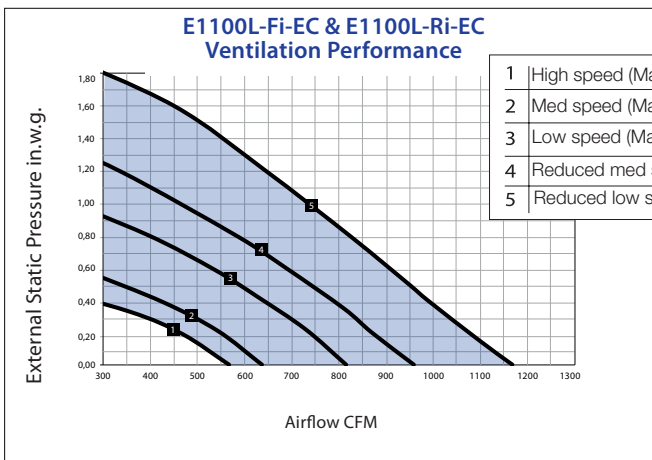


BOTTOM VIEW



SIDE VIEW

Performance



- 1 High speed (Max) 653W
- 2 Med speed (Max) 412W
- 3 Low speed (Max) 271W
- 4 Reduced med speed 152W
- 5 Reduced low speed 94W

	Sensible Recovery %	Latent Recovery %	Total Recovery %
100 % Air Flow Cooling	70%	60%	67%
75 % Air Flow Cooling	74%	65%	71%
100% Air Flow Heating	70%	47%	56%
75 % Air Flow Heating	74%	52%	60%
AHRI Core Reference Number	10346213		

© 2018 American ALDES Ventilation Corporation. Reproduction or distribution, in whole or in part, of this document, in any form or by any means, without the express written consent of American ALDES Ventilation Corporation, is strictly prohibited. The information contained within this document is subject to change without prior written notice.