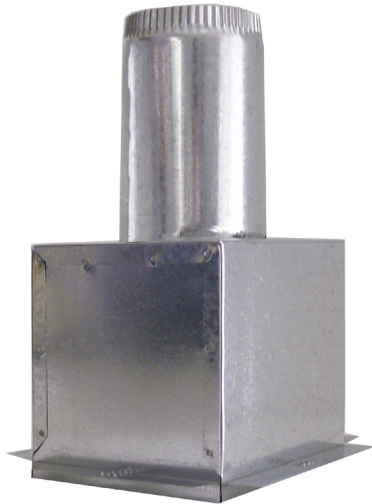




# RB-CFB

## Ceiling-Mount Radiant Damper Box With Back Take-Off Collar



When used with a CAR-II, the passive control element in each CAR-II compensates for changes in duct pressure caused by duct system design or installation, thermal stack effect, building pressure, dust-clogged filters, etc. The register box and CAR-II combination provides a low-cost solution to balancing ventilation and exhaust systems, essentially eliminating the need for on-site balancing. Automatic flow regulation is achieved without the use of electric or pneumatic sensors or controls.

The active control element of the CAR-II is a unique aerofoil. Using Bernoulli's Principle, the aero-wing damper lifts in response to increasing static pressure. This operation regulates the free-area opening through the control, maintaining velocity and specific airflow set points. Each CAR-II is designed and produced for control of air in temperatures ranging from -25° to 140°F (-32° to 60°C.)

### CONSTRUCTION

The RB-CFB is constructed of heavy-gauge galvanized steel with an extended duct collar that allows attachment of flexible or rigid duct.

The damper is constructed of 22-gauge roll-formed frame and blades. The standard fusible link is UL listed for 212°F (100°C). Optional 165°F (74°C) link is also available. Each damper is rated and qualified per UL 555C (File #9600), California State Fire Marshal (No. 3225-0935:102), City of New York Board of Standards and Appeals (No. 460-88-SA), and it meets NFPA 90A requirements.

### ORDERING

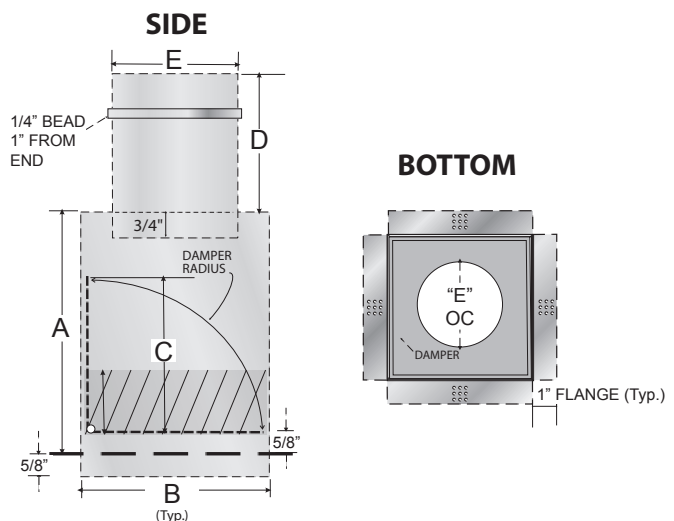
To order register boxes with Aldes Constant Airflow Regulators (CAR-II), see specification sheets for CERB-CFB-II (exhaust or return air) or CSRB-CFB-II (supply air). Models RB-CFB do not include Constant Airflow Regulators (CAR-II).

### DESCRIPTION

RB-CFB Ceiling Radiant Damper Boxes are designed for installation in fire-resistant membrane assemblies. Each RB-CFB is specifically designed to accommodate an automatic, self-regulating constant airflow regulator (CAR-II), which is sold separately, a UL 555C classified ceiling damper, and heavy-gauge angle mounting brackets. Optional flush-mount steel grilles are also available. The damper is approved by UL for use in floor/ceiling or roof/ceiling assemblies with up to 3-hour fire-resistance rating where air-handling openings are permitted.

## RB-CFB Dimensions

PART NUMBER	DUCT COLLAR*	A	B	C	D	E
54 037	4"	8"	5-7/8"	5-3/4"	4-1/2"	3-7/8"
54 038	5"	9"	7-7/8"	7-3/4"	5-3/4"	4-7/8"
54 039	6"	10"	9-7/8"	9-3/4"	5-3/4"	5-7/8"



© 2016 American ALDES Ventilation Corporation. Reproduction or distribution, in whole or in part, of this document, in any form or by any means, without the express written consent of American ALDES Ventilation Corporation, is strictly prohibited. The information contained within this document is subject to change without prior written notice.