

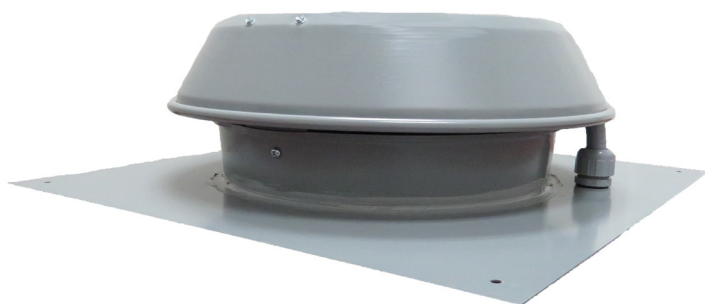


FANS

RMV Series

Roof-Mount Ventilator

PRODUCT
SPECIFICATIONS
& TECHNICAL
DATA



PRODUCT INFORMATION

RMV Series centrifugal-type roof/wall ventilators are suitable for residential or light-commercial applications. These fans are designed for easy installation and can be mounted at any angle. RMV series fans are approved for use as remote-mount exhausters with residential range hoods. The motors are capable of operating in air stream temperatures of up to 140°F. Fans are supplied with their own base for mounting to a roof curb or flat flashing on shingle roofs. All units are 100-percent speed controllable through a decrease in voltage using either a solid-state or transformer-type speed control. RMV exhausters can be supplied with optional equipment, including integral disconnect switch, duct-mounting clamps, backdraft dampers, etc. Five models are available, with airflows ranging from 100 to 1000 CFM.

AIR PERFORMANCE DATA

MODEL	VOLTS	NOMINAL RPM	MAX WATTS	MAX AMPS	AIRFLOW (CFM vs. Ps in. W.G.)											MAX Ps.
					0.00"	0.125"	0.25"	0.375"	0.50"	0.75"	1.00"	1.25"	1.50"	2.0"	2.5"	
RMV-A4/5	115	3040	19	0.18	116	105	92	79	65	36	1	--	--	--	--	--
RMV-A6	115	2700	87	0.80	227	213	199	184	169	134	106	80	5	--	--	1.84"
RMV-A8HP	115	2800	153	1.40	409	382	356	331	307	259	212	170	130	43	--	2.23"
RMV-A10HP	115	3250	394	3.60	753	738	721	705	690	656	622	586	548	467	383	4.03"
RMV-A10HPT	115	2950	531	4.86	1008	979	949	919	890	831	766	695	609	429	317	3.17"

Performance is for installation type 1 (free inlet, free outlet). Speed (RPM) shown is nominal. Performance is based on actual speed of test. Performance ratings do not include the effects of accessories.

WARNING!

DO NOT use in HAZARDOUS ENVIRONMENTS where fan's electrical system could provide ignition to combustible or flammable materials.

Typical Specification

CONSTRUCTION

Roof/Wall exhaust fans shall be of the centrifugal, direct-driven type. Fan housing shall be constructed of heavy-gauge galvanized sheet metal with a gray baked-enamel finish. Fan base shall be permanently mounted to roof (flat flashing base) or to a curb (flanged base). Base shall be provided with a gasket seal to prevent leakage. A conduit chase shall be provided for running electrical wiring through the base into the fan terminal box. Integral disconnect switch shall be provided when specified.

Motorized impeller shall be an external-rotor type, totally enclosed with permanent split capacitor. Motor shall be a permanently sealed, self-lubricating ball bearing type. Motor shall be equipped with automatic-reset thermal-overload protection. Motor shall be acceptable for continuous duty. Sufficient service factor shall be provided to ensure long, maintenance-free operation over maximum-load conditions.

Fan wheel shall be of the backward-inclined centrifugal type with a well-designed inlet venturi for maximum performance. Motorized impeller shall be both statically and dynamically balanced as one integral unit to provide for vibration-free performance.

PERFORMANCE

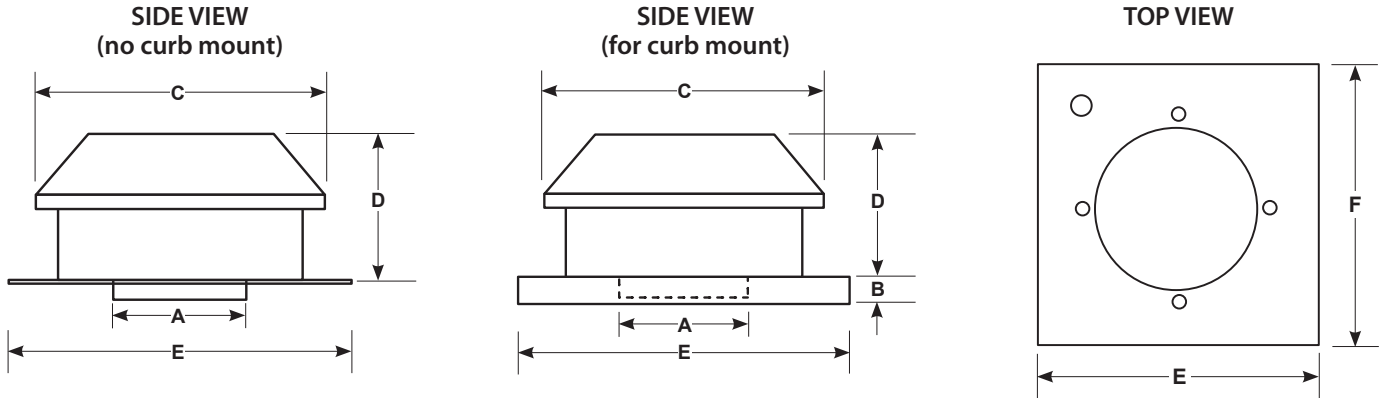
Fan performance shall be based on tests conducted in accordance with AMCA Standard 210 and 300.

CODE APPROVAL

Fan shall be tested and approved by CSA for safety.

RMV-A Series shall be manufactured under the authority of American ALDES Ventilation Corporation, Bradenton, FL.

Dimensions & Installation Applications

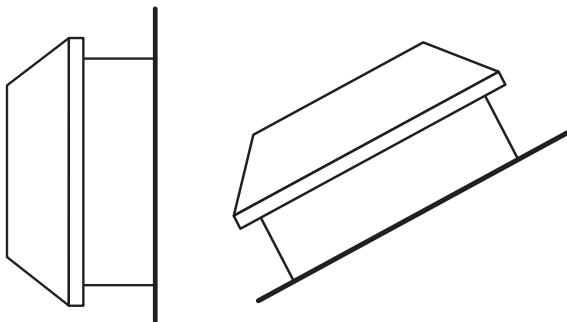


DIMENSIONS							
PART NUMBER	MODEL	A	B	C	D	E	F
99 143	RMV-A4/5 Roof-Mount Ventilator*	5"	--	10-15/16"	6"	15-1/2"	15-1/2"
99 043	RMV-A4/5C for Curb Mounting* **	5"	1-1/2"	10-15/16"	6"	15-1/2"	15-1/2"
99 144	RMV-A6 Roof-Mount Ventilator	6"	--	13-15/16"	6-1/4"	15-1/2"	15-1/2"
99 044	RMV-A6C for Curb Mounting**	6"	1-1/2"	13-15/16"	6-1/2"	15-1/2"	15-1/2"
99 145	RMV-A8HP Roof-Mount Ventilator	8"	--	16-9/16"	5-15/16"	20"	20"
99 045	RMV-A8HPC for Curb Mounting**	8"	1-1/2"	16-9/16"	5-15/16"	20"	20"
99 146	RMV-A10HP Roof-Mount Ventilator	10"	--	20-13/16"	11-1/2"	20"	20"
99 046	RMV-A10HPC for Curb Mounting**	10"	1-1/2"	20-13/16"	11-1/2"	20"	20"
99 147	RMV-A10HPT Roof-Mount Ventilator	10"	--	20-13/16"	12-11/16"	20"	20"
99 047	RMV-A10HPTC for Curb Mounting**	10"	1-1/2"	20-13/16"	12-11/16"	20"	20"

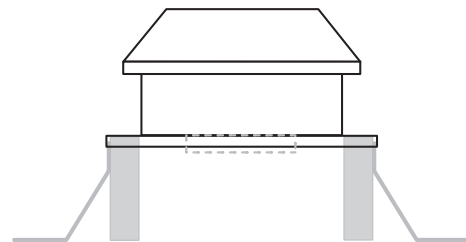
* Includes 5"-to-4" reducer to allow use of 4" duct.

** Curbs provided by others.

Flat base for side wall or pitched roof



With flange for curb installation (Curb not provided by ALDES)



WARRANTY

The entire unit is guaranteed for three (3) years, from date of shipment, against all manufacturing defects, provided the material has been installed and operated per manufacturer's instructions and under normal conditions. Warranty is limited to the repair or replacement of the material upon its return freight paid to our factory. This warranty is not transferable and is limited to the original end user.

© 2016 American ALDES Ventilation Corporation. Reproduction or distribution, in whole or in part, of this document, in any form or by any means, without the express written consent of American ALDES Ventilation Corporation, is strictly prohibited. The information contained within this document is subject to change without prior written notice.