

A close-up, profile view of a woman's face, looking slightly down. Her mouth is open, and several translucent bubbles are floating in the air around her, suggesting she is blowing. The background is a soft, out-of-focus bokeh of light and colors.

American Aldes

Building Air Quality Solutions

#HealthyLiving



Welcome!

- American Aldes Overview
- Product Ranges
 - Residential System Solutions
 - Fans
 - Airflow & Zone Control
 - Heat & Energy Recovery
 - Dryer Venting
 - Make-Up Air Solutions
 - Roof Caps, Wall Hoods, Grilles, & Duct Fittings
 - Fan Controls
- Price Lists
- Website/Resources
- Contact

AMERICAN ALDES OVERVIEW

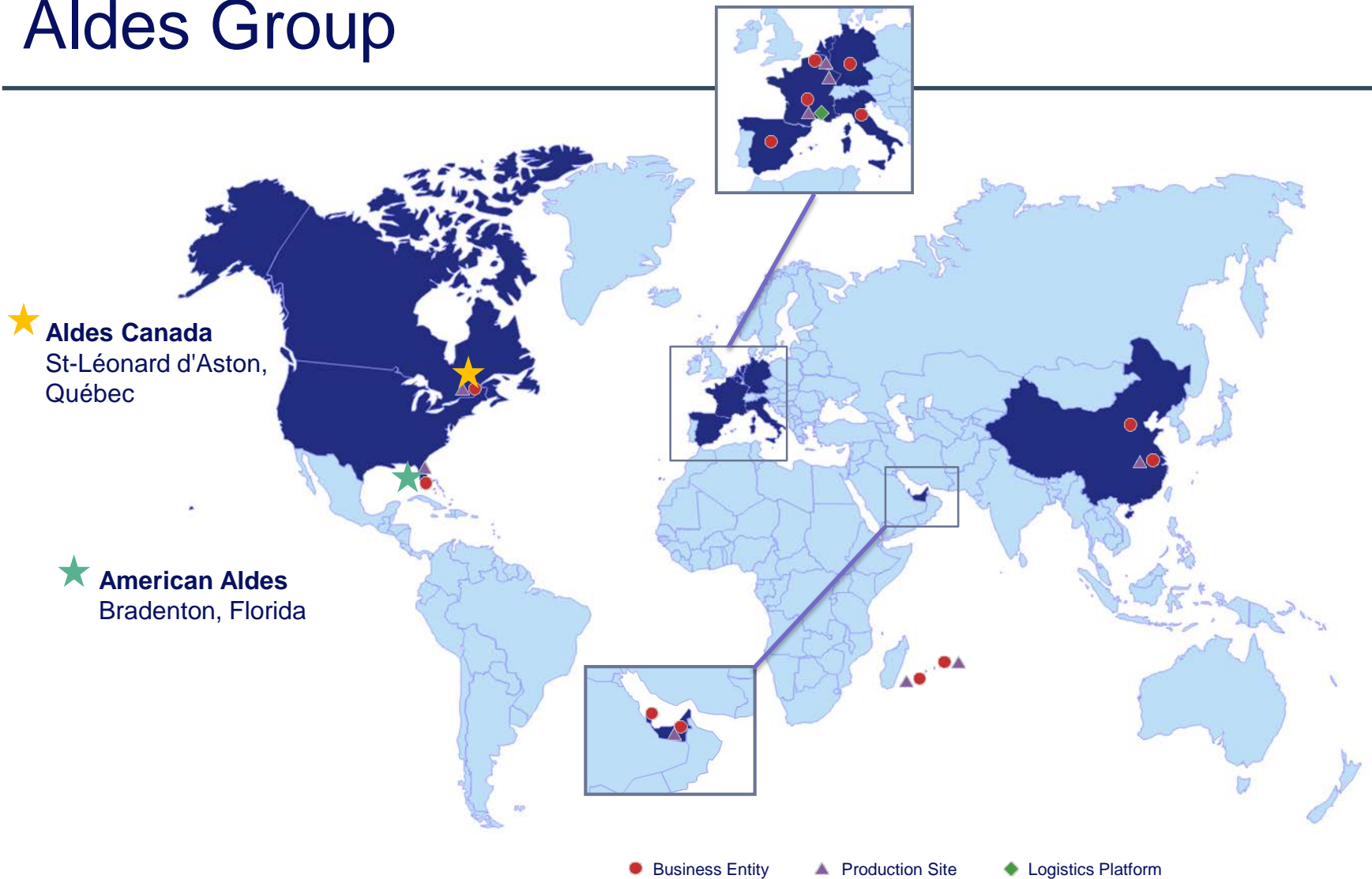
#HealthyLiving



About American Aldes

- American ALDES Ventilation Corporation is a subsidiary of Aldes Group
- Aldes Group was founded in 1925 in Lyon, France
- American Aldes was founded in 1983 in Sarasota, FL
- Key Locations
 - American Aldes
 - 4521 19th St. Ct. E., Ste. 104, Bradenton, FL 34203
 - American Aldes corporate office and primary production facility
 - Aldes Canada (sister company)
 - 100 rue Carter - Saint-Léonard d'Aston (Québec) Canada - J0C 1M0
 - Heat & Energy Recovery Ventilator production site

Aldes Group



Aldes Innovations

■ Aldes Worldwide

- More than 10 patents per year
- A total of 180 patents (including pending)

■ American Aldes

- American Aldes manufactured the first ENERGY STAR approved distributing supply and blending ventilators (part of the Ventergy® Series fan range).
- The patented Zone Register Terminal (ZRT-2) received the 2013 AHR Expo Innovation Award for Ventilation.
- American Aldes received AHR Innovation Award “Honorable Mention” for VentZone® Zoned IAQ with Heat Recovery Kits in 2014, and the ZRT-PDIL (Parallel Damper In-Line Zone Terminal) in 2015.

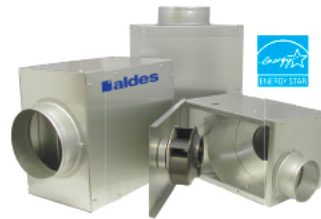


American Aldes Product Lines

- Every American Aldes product is equal parts innovation and experience.
- By working with builders, developers, engineers, architects, and government officials, American Aldes has helped advance the construction of energy-efficient buildings.



**Residential
System Solutions**



Fans



**Airflow &
Zone Controls**



**Heat & Energy
Recovery**



Dryer Venting



**Make-Up Air
Solutions**



**Roof Caps, Wall
Hoods, Grilles
& Duct Fittings**



Fan Controls

Markets Served

Residential



Single-Family Housing



Multi-Family Housing

Commercial



Offices



Animal Facilities



Retail & Entertainment



Hotels



Fitness Centers



Restaurants



Schools & Universities



Salons & Spas



Transportation



Healthcare



Senior Living



Industrial Facilities

Residential System Solutions

- For optimal performance and cost savings, American Aldes provides engineered systems specifically designed to integrate all necessary components into a single solution.
 - Bathroom Ventilation
 - Whole-House/IAQ Ventilation
- Trade Names
 - VentZone® Systems
 - Ventergy® Series Fans
- Standards
 - ASHRAE 62.2, ENERGY STAR with IAP, LEED for Homes, California Title 24 (CALGreen)



**Multi-Port
Bath Fan Kit**



**VentZone®
Zoned IAQ with
Heat/Energy
Recovery Kits**

Residential System Solutions

- **Energy Star:** Fans and HRV/ERVs*
- **One penetration:** Reduce roof caps, labor, and increase useable roof space
- **Remote fans:** Move the source of the noise for quiet operation
- **On-demand boost:** Low-volume continuous and high-speed boost when properly equipped
- **Complete package:** Includes all major hardware, minus the duct
- **Predetermined kits:** Kits are based on typical home configurations for easy selection

*Energy Star rating for residential heat and energy recovery equipment is via Energy Star Canada

Residential System Solutions

■ Featured Projects



More than **150,000 single-family homes** in the United States have Aldes brand ventilation products, and more than **2,000,000 single-family homes worldwide** are equipped with Aldes products.

Luxury home builders routinely use Aldes' premium central bath exhaust systems, and energy-efficient builders incorporate Aldes' renowned Indoor Air Quality (IAQ) central supply fan and energy recovery systems.

■ Aldes Strength:

American Aldes is the manufacturer of choice for providing central ventilation systems for large areas of homes impacted by aircraft noise. FAA-sponsored Residential Sound Insulation Programs (SIP) mandate the use of mechanical ventilation systems in homes that have been sealed to minimize noise entry.

Since 2008, Aldes products have been installed in **more than 15,000 homes** in areas surrounding U.S. airports.

Fans

- Cost effectiveness and efficient performance are the principle features of American Aldes Ventergy® Series ENERGY STAR rated fans. American Aldes offers a wider selection of ENERGY STAR rated fan configurations than any other manufacturer.
 - Ventergy® Series Fans
 - In-Line Duct Fans
 - Roof- or Wall-Mount Ventilators
- Trade Names
 - Ventergy® Series Fans
- Certifications & Standards
 - Energy Star
 - All Ventergy® Series Fans meet California Energy Commission (CEC) Standards



MPVS
Multi-Port
Exhaust Fan



BVS
Blending Supply
Ventilator

Fans

- **Easy to configure:** Select the number of connections you need for each project/unit
- **Multiple CFM options:** 100 to 250 CFM fans
- **Internal insulation:** Quiet and condensate resistant
- **Accessible motors:** Hinged access panel means easy maintenance where competitors are often sealed

Fans

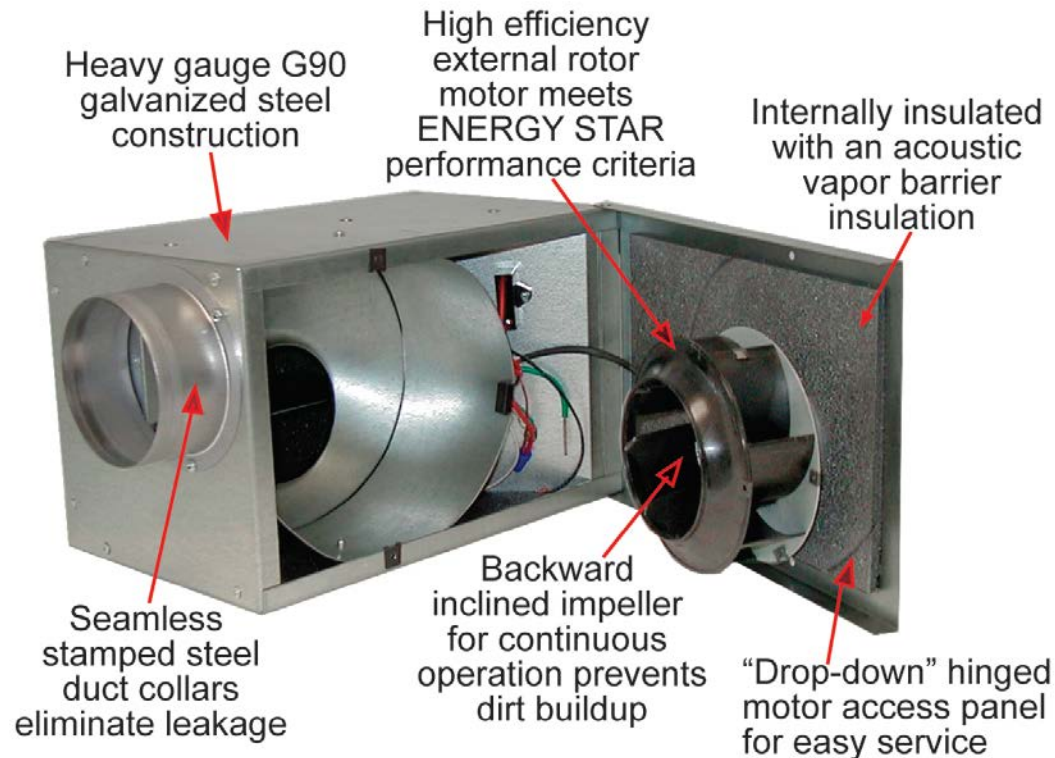
■ Ventergy® Series Fans

- The perfect combination of ventilation performance, energy efficiency, and application flexibility.
- Use for whole-house IAQ or room-specific ventilation in homes and apartments in any climate or region
- Every fan in the series has been certified by ENERGY STAR
- Key Products:
 - Multi-Port Fans
 - In-Line Fans
 - Filtering Supply Air Ventilators
 - Distributing Supply Air Ventilators
 - Blending/Filtering Ventilators
 - RMV – Roof- or Wall-Mount Ventilators



Fans

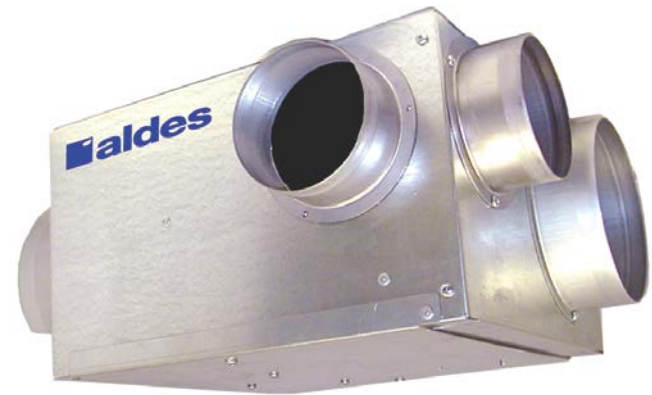
■ Ventergy® Features



Fans

■ Multi-Port Fans

- Max CFM Range: 287
- Used for central, continuous exhaust
- Low power consumption
- Quiet operation
- 2-to-4 exhaust points
- Eliminates noisy bath fans when used as a central exhaust system
- Ideal for zoning applications
- Reduces number of exterior penetrations



MPVS150
Multi-Port Exhaust
Ventilator



Fans



VS4
Ventergy® Series
In-Line Ventilator

- **In-Line Fans**
 - Max CFM Range: 287
 - For intermittent or continuous use
 - Low power consumption
 - Quiet operation
 - Condensation-proof IAQ lined cabinet
 - Speed controllable
 - Ideal for zoning applications
 - Compact for kitchens, laundry rooms, bathrooms, and garages

Fans

■ Filtering Supply Air Ventilators

- Max CFM Range: 178
- Designed to provide precise amounts of outdoor air to the occupied space
- Filters and distributes incoming fresh air
- Slightly pressurizes the space to prevent unwanted infiltration and back drafting
- Quiet operation
- Versatile control options



FSVS140
Single-Port Filtering
Supply Air Ventilator

Fans

- Distributing Supply Air Ventilators
 - Max CFM Range: 130
 - For continuous use
 - Low power consumption
 - Multiple filter options
 - Precise airflow rates from passive airflow control regulators
 - Provides precisely regulated filtered fresh air
 - Creates a slight positive air pressure to prevent unwanted infiltration through building envelope
 - Quiet operation



DSVS100
Multi-Port Distributing
Supply Air Ventilator



Fans

- **Blending/Filtering Ventilators**
 - Max CFM Range: 247
 - For continuous use
 - Low power consumption
 - Speed controllable
 - Quiet Operation
 - Blends fresh outdoor air with tempered indoor air
 - Improves air distribution, especially in homes without central forced-air heating systems
 - Filters prevent the introduction and recirculation of contaminants
 - Optional CAR-II's accurately balance the amount of air so that the home meets ASHRAE 62.2 requirements



BVS120
Blending/Filtering
Ventilator

Fans

■ Featured Projects



Woodlands & Council Towers VII
180 affordable senior housing units
Bronx, NY

Multi-Port Exhaust Fans (MPVS100)



Centerra Apartments
347 high-end apartments
San Jose, CA

In-Line Exhaust Fans (VS4-MAX)

Airflow & Zone Controls

- American Aldes Airflow & Zone Control products are designed to introduce flexibility and dynamic control to any central ventilation system. These products correct common ventilation issues such as stack effect and poor airflow balance.
 - Constant Airflow Regulators
 - Constant Exhaust/Supply Registers
 - Zone Register Terminals
 - Dampers & Specialty Exhaust Grilles
- Certifications & Standards
 - UL Classified (CAR-II and MR Modulo)
 - ETL (ZRT)



**CAR-II
Constant
Airflow
Regulator**



**ZRT
Zone Register
Terminals**



**ZRT-IL
In-Line Zone
Register Terminal**

www.aldes.us/airflow-zone-controls

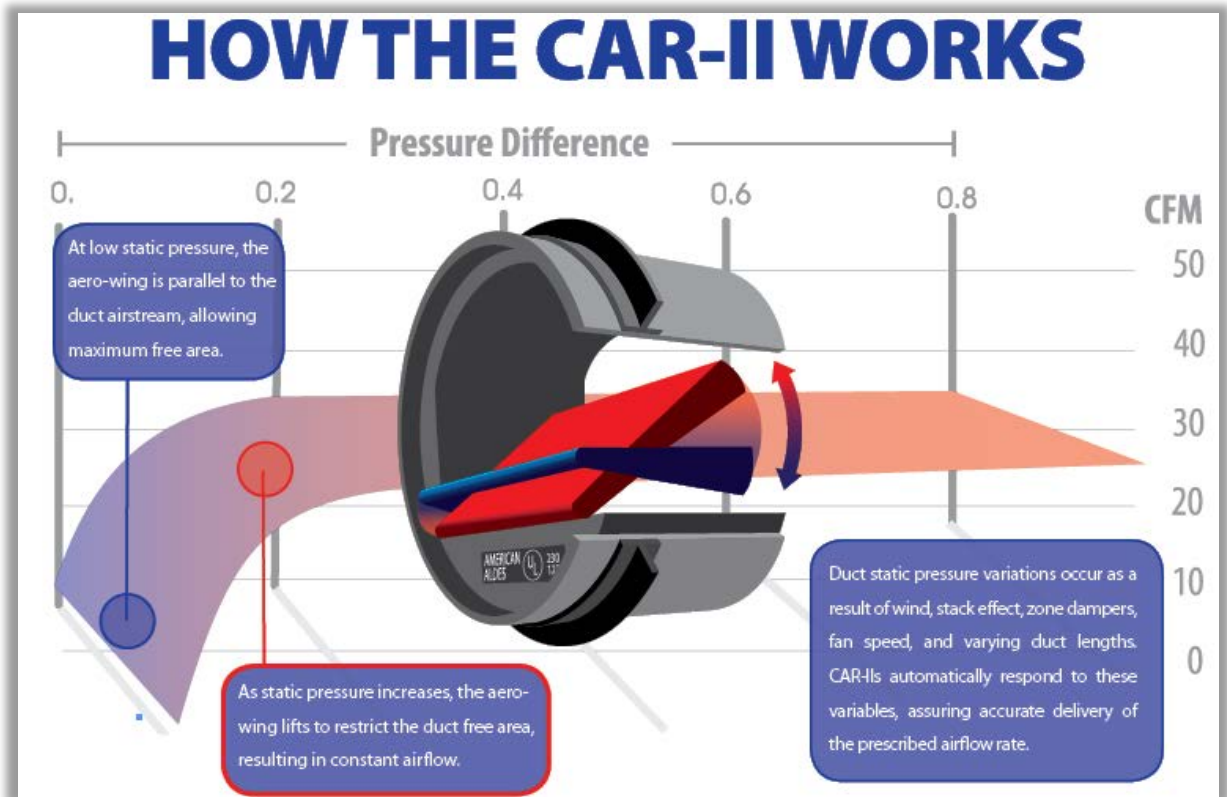
Airflow & Zone Controls

- **Automatic balancing:** Hands and controls-free balancing dampers automatically self balance
- **Easy to use:** Available as an assembly or standalone device, these install easily into supply or exhaust systems without requiring specialized tools or training
- **Increase efficiency:** Balance the entire ventilation system year round to reduce wasted energy in fan consumption and heating/cooling costs
- **On-demand ventilation:** Zone control devices provide balanced, demand based ventilation for a variety of applications
- **Patented technologies:** Zone Register Terminal (ZRT[®])*

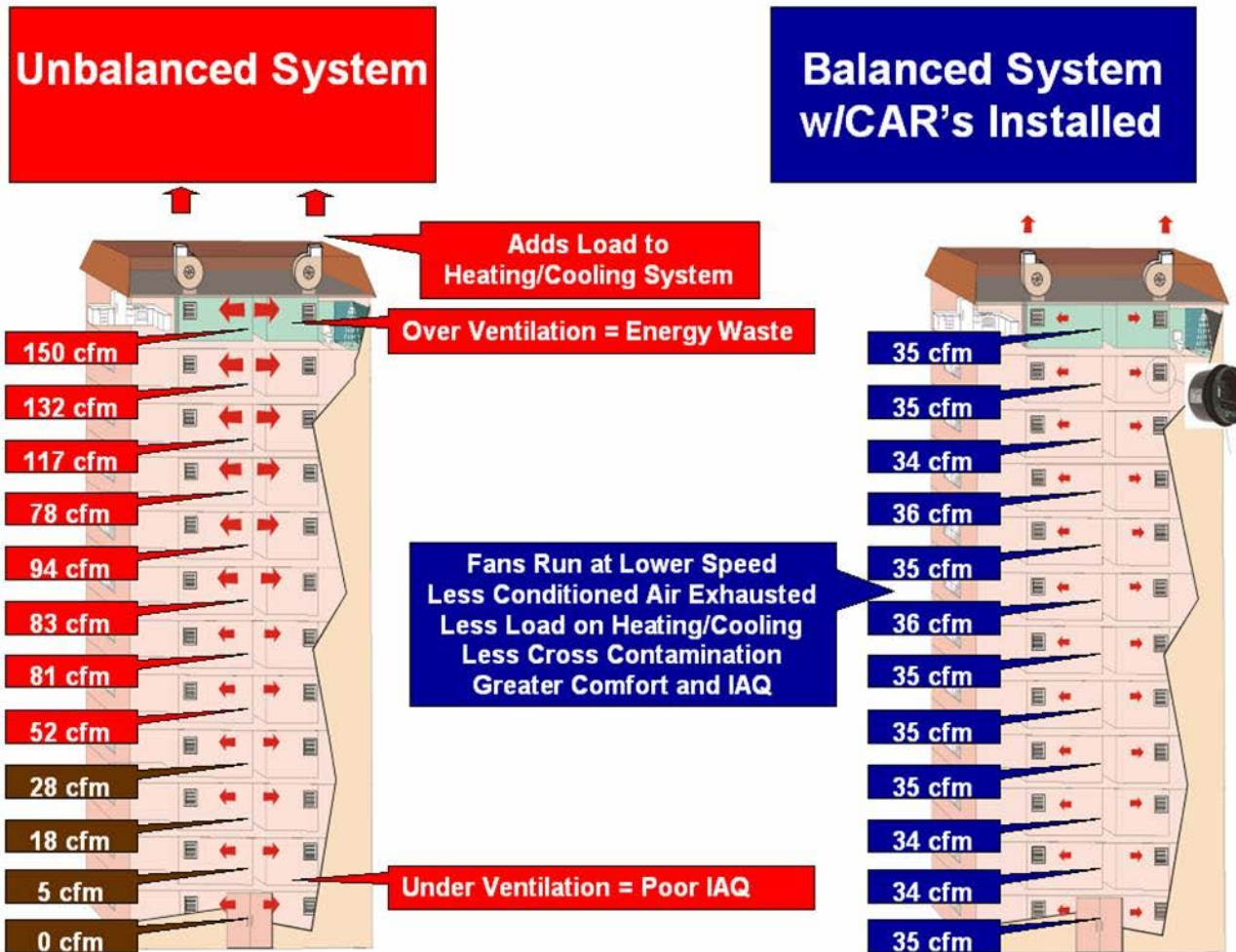
* U.S. Pat. No. 7,766,734 Can. Pat. No. 2,570,948

Airflow & Zone Controls

- The Constant Airflow Regulator (CAR-II) is a modulating device that automatically regulates airflow to constant levels.
- Like the wing of an airplane, the faster air travels across the aerofoil, the more it lifts to accurately maintain a constant CFM.



Airflow & Zone Controls

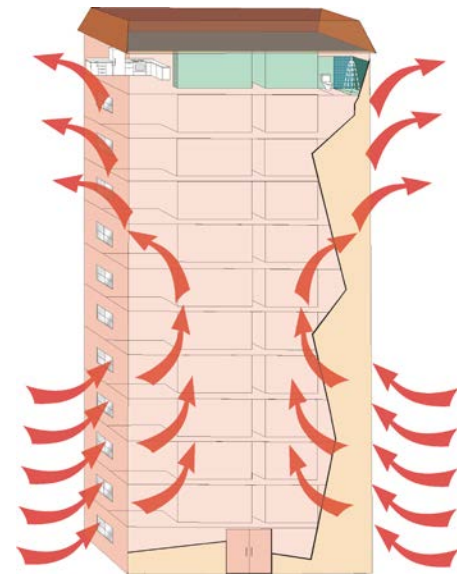


- The CAR-II also corrects issues caused by:
 - Wind
 - Duct Length
 - Leakage
 - Loading
 - Design Flaws
 - Occupants

Airflow & Zone Controls

- **Stack Effect**
 - Pressure variances among floors due to height and temperature differences between outside and inside air
 - Common in high-rise buildings with central ventilation systems
 - Some floors are over-ventilated (energy wasted) and some floors are under-ventilated (poor IAQ)
- **How the CAR-II Eliminates Stack Effect**
 - CAR-II regulates airflows at every exhaust point
 - Reduces the load on heating and cooling systems, saving energy and money
 - Improves IAQ because it eliminates cross-contamination between floors

Each opening in the shaft is exposed to different pressures



The CAR-II also corrects issues caused by wind, duct length, leakage, loading, design flaws, and occupants

Airflow & Zone Controls

- The MR MAX Constant Airflow Regulator is a modulating orifice that automatically regulates airflows in round or square/rectangular duct systems to constant levels without the use of electric or pneumatic sensors or controls.
- Flow control is achieved by an easy-moving, asymmetrical angled control damper.
- The damper is inclined according to the pressure difference between upstream and downstream of the regulator module.



**MR MAX
(round)**



**MR MAX
(square/rectangular)**

Airflow & Zone Controls

- The patented* Zone Register Terminal (ZRT®) is designed to introduce flexibility and dynamic control to central exhaust or supply ventilation systems.
- The ZRT® is a combination grille/register box, control damper, and optional Constant Airflow Regulator (CAR-II).



ZRT-S
Zone Register
Terminal (Supply)



ZRT-FR
Zone Register
Terminal with Fire
Damper



ZRT-W-FRS
Wall-Mount Zone Register
Terminal (Supply) with
Fire Damper

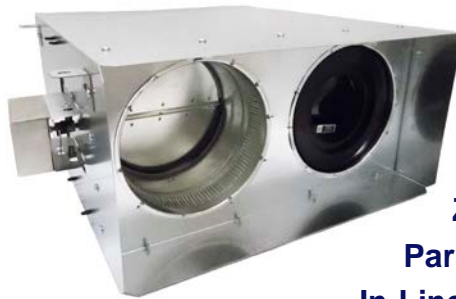
* U.S. Pat. No. 7,766,734 Can. Pat. No. 2,570,948

Airflow & Zone Controls

- Zone Register Terminal Selection Guide

MODEL NAME	USE		MOUNTING			INCLUDED	
	Exhaust	Supply	Ceiling	Wall	In-Line	Fire Damper	Grille
ZRT	X		X				X
ZRT-S		X	X				X
ZRT-FR	X		X			X	X
ZRT-FRS		X	X			X	X
ZRT-W	X			X			X
ZRT-WS		X		X			X
ZRT-W-FR	X			X		X	X
ZRT-W-FRS		X		X		X	X
ZRT-IL	X	X			X		

Airflow & Zone Controls



ZRT-PDIL
Parallel Damper
In-Line Zone Terminal



ZRT-3PDIL
Three Parallel Damper
In-Line Zone Terminal

- The Parallel Damper In-Line Zone Terminal (ZRT-PDIL) combines low-flow IAQ or make-up air and on-demand high-flow spot ventilation, replacing individual fans or variable air volume (VAV) terminals.
- The ZRT-PDIL is a two-position pressure-independent terminal with a control damper to regulate high-limit on-demand airflow control and integral passive regulators (CAR-II) for automatic air balancing of the minimum and maximum setpoints.

Airflow & Zone Controls

- Parallel Damper In-Line Zone Terminal Selection Guide

MODEL NAME	SETPOINTS	MOUNTING	STATIC PRESSURE RANGE	
			Standard 0.2-0.8 in. w.g.	High 0.6-2.4 in. w.g.
ZRT-PDIL	2	In-Line	X	
ZRT-PDIL-HP	2	In-Line		X
ZRT-3PDIL	3	In-Line	X	
ZRT-3PDIL-HP	3	In-Line		X

Airflow & Zone Controls

■ Featured Projects

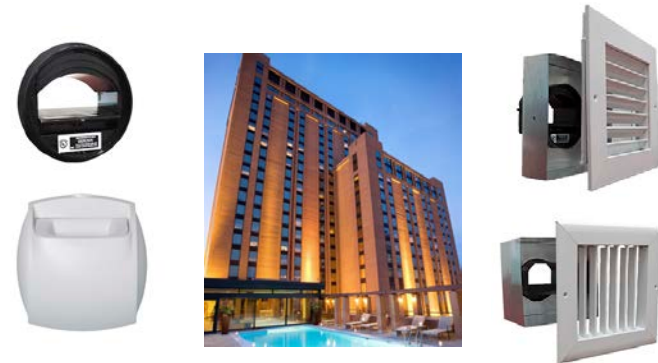


432 Park Ave.

Luxury condos

Tallest residential building in Western Hemisphere
New York, NY

CAR-SS-II, CAR-SE-II, CAR-FSA-II, CAR-II



JW Marriott Houston

490-room hotel

Houston, TX

CEG-II, CSR-S-II, CER-S-II, CAR-II-HP



W57

709 high-rise apartments

New York, NY

ZRT-2, CSR-FSA-II, CSR-R-II, CER-FEA-II,
CER-R-II, CAR-FEA-II, CSRB-CS-II



State & Chesnut

35-story apartment tower

Chicago, IL

ZRT-W-1-MAX

#HealthyLiving



Heat & Energy Recovery

- American Aldes manufactures Heat and Energy Recovery Ventilators (HRV/ERV) using all available exchange technologies – aluminum, polypropylene, high-latent-transfer membrane, enthalpic membrane, and desiccant wheel – so you can choose the most appropriate method for your application and climate.
 - InspirAIR™ Home Residential & InspirAIR™ Compact Multi-Family
 - Light Commercial
 - Commercial
- Trade Names
 - InspirAIR™ Home
 - InspirAIR™ Compact
- Certifications & Standards
 - AHRI
 - ETL
 - HVI
 - ENERGY STAR



**InspirAIR™ Compact
Multi-Family Series**



**Light
Commercial
Series**



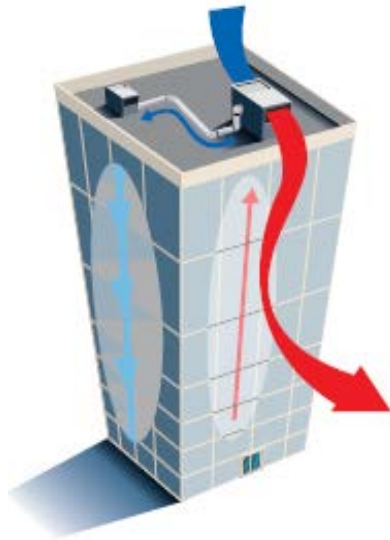
**Low-Profile
Commercial
Series**

www.aldes.us/heat-energy-recovery

Heat & Energy Recovery

- **Multiple core technologies:** Whether selecting the heat exchanger technology based on location or price, ALDES has the flexibility to provide the right option.
- **Residential through Commercial:** Single-family homes, multi-family, or commercial buildings are all covered
- **Customizable commercial equipment:** Various options between the model series provides a competitive solution for each project requirement

Heat & Energy Recovery



- Heat Recovery Ventilator (HRV): transfers sensible heat energy from warm air to cold air.
- Energy Recovery Ventilator (ERV): transfers sensible heat energy from warm air to cold air and moisture-latent energy from moist air to dry air.
- Available exchange technologies include: aluminum, polypropylene, high-latent-transfer enthalpy, polymeric enthalpic membrane, and desiccant wheel.
- Models range from 95 to 11000 CFM

Heat & Energy Recovery

- Five Different Core Technologies
 - Sensible Energy Exchange
 - Aluminum Core
 - Polypropylene Core
 - Sensible and Latent Energy Exchange
 - Desiccant Wheel
 - Polymeric Enthalpic Membrane Core
 - High-Latent-Transfer Enthalpic Core



**High-Latent-Transfer
Enthalpic Core**



**Polymeric Enthalpic
Membrane Core**



**Aluminum
Core**



**Polypropylene
Core**



**Desiccant
Wheel**

Heat & Energy Recovery



H95-TRG



H190-TRG

- InspirAIR™ Home Standard Residential Series
 - 95-190 CFM
 - Polypropylene (sensible only) and High-Latent-Transfer Enthalpy (sensible and latent) core options
 - Fan Exhaust or Recirculation
 - Top-mounted collars
 - Flexible installation
 - EvacMAX™
 - FLEXControl

Heat & Energy Recovery

- InspirAIR™ Compact Multi-Family Series
 - 80-130 CFM
 - Polypropylene (sensible only) and High-Latent-Transfer Enthalpy (sensible and latent) core options
 - Recirculation Defrost
 - Efficient and economical
 - Low-profile for small spaces



E130-HR



E80-HRG

Heat & Energy Recovery

- Light Commercial Series
 - 240-1800 CFM
 - Polypropylene or Aluminum (sensible only) core options
 - Polymeric Enthalpic Membrane (sensible and latent) core options
 - Exhaust and Recirculation Defrost
 - Pool Option (HRV only) with stainless steel interior and totally enclosed motors
 - Motorized impellers



H240-Ri



E1100-Fi

Heat & Energy Recovery

- Standard Commercial Series
 - 500-4000 CFM
 - Polypropylene or Aluminum (sensible only) core options
 - Standard Enthalpy, High-Efficiency Enthalpy, High-Latent-Transfer Enthalpy (sensible and latent) core options
 - Exhaust Defrost, Recirculation, and Pre-Heat Coils Defrost Modes
 - High Performance
 - EC Motor Options
 - Interior and Exterior Units



SH1000i



SE2000e

Heat & Energy Recovery



LW1500i



LH2000e

- Low-Profile Commercial Series
 - 500-3500 CFM
 - Polypropylene or Aluminum (sensible only) core options
 - Enthalpy Core or Enthalpy Wheel (sensible and latent) core options
 - Exhaust Defrost, Recirculation Defrost, Pre-Heat Coils, and Wheel Speed VFD Defrost Modes
 - Compact Design
 - Standard and Custom Features
 - Interior and Exterior Units

Heat & Energy Recovery

■ Advanced Commercial Series

- 1000-11000 CFM
- Polypropylene or Aluminum (sensible only) core options
- Enthalpy Core or Enthalpy Wheel (sensible and latent) core options
- Exhaust Defrost, Recirculation Defrost, Pre-Heat Coils, Face & Bypass Damper, and Wheel Speed VFD Defrost Modes
- Heating and Cooling Coils
- Interior and Exterior Units



CE2000i



CH8000e

Heat & Energy Recovery

■ Aldes Selection Software

- Build unit selections based on exact design conditions and specifications
- All projects are conveniently stored for quick reference
- Generate project schedules
- Share selections easily
- Import selections generated by other Selector™ users
- Print all project information
- Contact techsupport-us@aldes.com for access



Heat & Energy Recovery

■ Featured Projects



Guiding Eyes for the Blind

Guide dog training school
Yorktown Heights, NY

CE3000i and CE5000i



Tanalian School

K-12 Public School
Port Alsworth, AK

CH2000i and CH5000i



High Point University Centennial Square

Multi-building student housing development
High Point, NC

E650-Fi



Lofts at River East

285-unit luxury apartment building
Chicago, IL

SE3000e and SE4000e

Dryer Venting

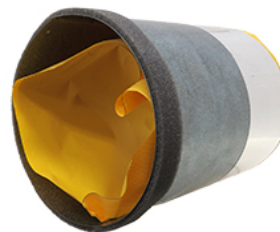
- Dryer Booster Fans (by Fantech) work with most residential clothes dryers. Their unique design allows lint to flow through the duct easily, and they compensate for system duct loss due to long duct runs. A variety of accessories, including vent boxes, roof caps, wall hoods, and lint traps are also available.
- Certifications & Standards
 - ETL
 - HVI



**DBF4XL
Dryer
Booster Fan**



**In-Line Lint
Trap**



Cape Backdraft Damper

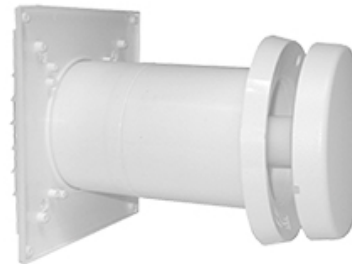
www.aldes.us/dryer-venting

Make-Up Air Solutions

- Complete exhaust ventilation systems require complementary make-up air solutions. American Aldes offers a comprehensive line of AIRLET™ make-up air inlets.
 - Passive Through-Wall AIRLETS™
 - Window AIRLETS™



**AIRLET™
TL98
Manually
Adjustabl
e Fresh
Air Inlet**



**AIRLET™ 700
Temperature-
Controlled
Fresh Air Inlet**



**AIRLET™ 4000
Acoustic-Filtering
Surface-Mounted Inlet**

www.aldes.us/make-up-air-solutions

Make-Up Air Solutions

- **Self-regulating:** Automatically restricts outside air to predetermined rates to prevent drafts on breezy days
- **Multiple designs:** Rectangular and round designs available with multiple exterior louver options
- **Multiple control strategies:** Simple, continuous outside air, manually adjustable, or automatic based on temperature or humidity
- **Direct ventilation:** Provide outside air directly into the spaces requiring it

Make-Up Air Solutions

■ Featured Projects



Marina del Rey Hotel

164-room luxury hotel

Marina del Rey, CA

AIRLET™ 200

Round Self-Regulating Fresh Air Inlets



Halawa View & Kewalo Apartments

Affordable multi-family housing

Honolulu, HI

AIRLET™ TL98

Manually Adjustable Fresh Air Inlets



Myrtle Terraces

1- and 2-bedroom senior living units

Gainesville, GA

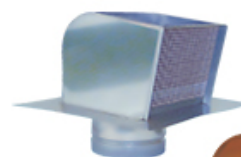
AIRLET™ TL98

Manually Adjustable Fresh Air Inlets

Roof Caps, Wall Hoods, Grilles & Duct Fittings

- American Aldes provides all the accessories you need to complete your ventilation system. These components are engineered to work with American Aldes ventilation products for optimal appearance and performance.

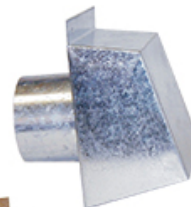
- Roof Caps
- Wall Hoods
- Specialty Exhaust Hoods & Vents
- Grilles
- Duct Fittings



**High-Performance
Roof Caps**



Algrilles



**High-Performance
Wall Hoods**

www.aldes.us/roof-caps-wall-hoods-grilles-duct-fittings

Fan Controls

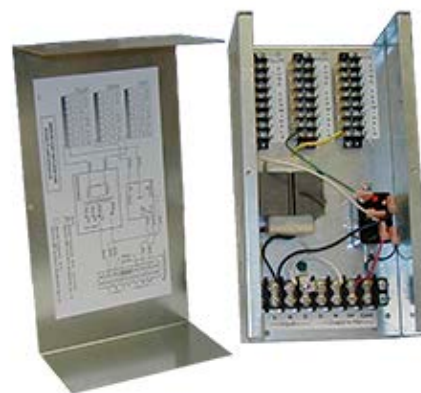
- American Aldes offers corresponding fan controls for our ventilation products. The controls range from basic twist timers to advanced pressure-sensing controls for regulating ventilation in large buildings.
 - Fan Timers
 - Pressure Switches
 - Variable Speed Controls
 - Dehumidistat Controls
 - Current Sensing Switches



**7-Day
Programmable
Timer**



**Electronic
Fan/Light
Timer Switch
Control**



**ZTC
Zone Terminal Control**

www.aldes.us/fan-controls

Price Lists



2016 Plan & Spec Price List

- What: All products with list prices
- Audience: Plan & Spec Reps
- Confidential: **Yes**
- Print Copies Available: Yes
- Where to Download: www.aldes.us/rep-log-in
(You will need your username and password)



2016 Product Catalog

- What: All products, no prices
- Audience: Anyone
- Confidential: No
- Print Copies Available: Yes
- Where to Download: www.aldes.us/resources



2016 Commercial HRV/ERV Price List

- What: HRV/ERV products with list prices
- Audience: Equipment-only Plan & Spec Reps
- Confidential: **Yes**
- Print Copies Available: Yes
- Where to Download: www.aldes.us/rep-log-in
(You will need your username and password)



2016 General Distribution Price List

- What: Non-protected products and list prices
- Audience: Wholesalers
- Confidential: **Yes**
- Print Copies Available: Yes
- Where to Download: Link provided by request only

Website

■ www.aldes.us

- Our website is a great resource for you
- We add new information regularly

The screenshot displays the American Aldes website. At the top, the Aldes logo is on the left, and the phone number 1.800.255.7749 with a 'Contact Us' link is on the right. A search bar with a 'GO' button is also present. Below the header is a navigation menu with links: HOME, COMPANY, PRODUCTS, NEWS, PROJECTS, RESOURCES, HOW TO BUY, and REP LOG IN. The main content area features three large images representing different building types: RESIDENTIAL, MULTI-FAMILY, and COMMERCIAL. Below these is a section titled 'Exciting Additions to the Standard Commercial HRV/ERV Range' with a 'Learn More' button. To the right of this section is a 'Ventilation Innovation' text block and an 'Air & People' section. At the bottom, there are four columns: NEWS, Resources, Projects, and Locate Distributor. The footer contains contact information for American Aldes Ventilation Corporation, including address, phone, fax, and email, as well as social media links and a copyright notice for 2015.

aldes American Aldes

1.800.255.7749 Contact Us

Search ... GO

HOME COMPANY PRODUCTS NEWS PROJECTS RESOURCES HOW TO BUY REP LOG IN

The premier manufacturer of ventilation products and systems

RESIDENTIAL

MULTI-FAMILY

COMMERCIAL

Exciting Additions to the Standard Commercial HRV/ERV Range

New high-latent-transfer enthalpy core, EC motors, and expanded frost control and heating options.

Learn More

Ventilation Innovation

Engineering tomorrow's solutions is more than an idea – it is a guiding principle. Every American Aldes product is equal parts innovation and experience. From automatic airflow controls to advanced heat and energy recovery ventilators, American Aldes products can be found in high-performing homes and buildings across the United States.

Air & People

For more than 30 years, American Aldes has worked to improve indoor air quality, save energy, and reduce building operating costs. By working with builders, developers, engineers, architects, and government officials, American Aldes has helped advance the construction of healthy, energy-efficient buildings.

NEWS

New Products, Industry News, and Upcoming Events

Resources

Case Studies, Calculation Tools, and Presentations

Projects

Featured Projects and Success Stories

Locate Distributor

Homeowners, Licensed Contractors, and Specified Projects

American Aldes Ventilation Corporation

Address: 4521 19th St. Ct. E., Suite 104, Bradenton, FL 34203

Direct: 1.941.351.3441 | Fax: 1.941.351.3442 | Toll-Free: 1.800.255.7749

E-mail: info@americanaldes.com

Questions?

Get expert advice from our engineers. Call 8a-5p EST

Click to E-mail

HVI MEMBER

IAQ HOTLINE

800-255-7749

©2015 American Aldes Ventilation Corporation. All rights reserved. Terms of Use Sitemap

aldes

Website – Resources

■ www.aldes.us/resources

The screenshot shows the 'Resources' page of the Aldes American Aldes website. The page has a navigation bar with links: HOME, COMPANY, PRODUCTS, NEWS, PROJECTS, RESOURCES (highlighted), HOW TO BUY, and REP LOG IN. Below the navigation bar is a breadcrumb trail: 'You are here: Home > Resources'. The main content area is titled 'Resources' and is divided into several sections:

- 2016 PRODUCT CATALOG**: Includes a link to the '2016 Product Catalog (18 MB PDF)' and a link to 'Contact us for a General Distribution Price List'.
- VIDEOS**: Includes a link to 'Demonstration Videos' and a list of video topics: 'Stack Effect', 'CAR-II vs Fixed Opening', 'Zone Control', 'Constant Airflow Regulation', and 'Window Ventilation'.
- PRESENTATIONS**: Includes a link to 'Building Air Quality Solutions' and a link to 'Aldes SIP Ventilation Design Guide'.
- APPLICATION GUIDES**: Includes a link to 'Home Ventilation Systems' and a link to 'Finding Acceptable IAQ with ASHRAE 62.2-2013'.
- TOOLS**: Includes a link to 'HRV/ERV Selection Software' and a link to 'Selection Software User's Manual'.
- CASE STUDIES**: Includes a link to 'PATH Field Results on CARs' and a link to 'Multifamily Ventilator Retrofits for Energy Savings'.
- COMPANY DOCUMENTS**: Includes a link to 'Terms and Conditions' and a link to 'Freight Policy'.

Callout boxes with arrows point to specific sections:

- 'Download the Product Catalog' points to the 2016 Product Catalog section.
- 'Product Videos' points to the VIDEOS section.
- 'Presentations & Application Guides' points to the PRESENTATIONS and APPLICATION GUIDES sections.
- 'Selection Software & Tools' points to the TOOLS section.
- 'Case Studies' points to the CASE STUDIES section.
- 'Company Forms' points to the COMPANY DOCUMENTS section.

#HealthyLiving



Contact Information

American ALDES Ventilation Corporation

4521 19th Street Court East, Suite 104

Bradenton, FL 34203

941-351-3441 (main)

941-351-3442 (fax)

800-255-7749 (toll-free)

info@americanaldes.com

www.aldes.us

© 2016 American ALDES Ventilation Corporation

#HealthyLiving

